









# REALWEAR ACCESSORIES CATALOG

September 2022

# Table of Contents

Section	Page	Click the Arrow to Jump to Section
RealWear Mounting Options	5	
RealWear Power Solutions	17	
RealWear Audio Accessories	23	
RealWear Camera Accessories	25	
RealWear Connectivity Accessories	27	
Other Accessories	30	

# RealWear Accessories Catalog

Category	SKU	Product	MSRP	Compatibility		
				RealWear Navigator™ 500	HMT-1	HMT-1Z1
Mounting Options	127125	Workband 2	\$ 40.00	Yes	Yes	No
	127104	RealWear Ball Cap with Mounts	\$ 40.00	Yes	Yes	No
	171034	Bump Cap – Standard	\$ 40.00	Yes	Yes	No
	171095	Bump Cap – Extra Large	\$ 42.50	Yes	Yes	No
	171035-A	Flexband (3-point silicone band with chinstrap for clean rooms)	\$ 75.00	Yes	Yes	No
	171017	Rear Pad (6-Pack)	\$ 50.00	No	Yes	Yes
	171018	Overhead Strap (6-Pack)	\$ 30.00	No	Yes	Yes
	127100	Tri-Band Strap (RealWear Navigator™ 500)	\$ 25.00	Yes	Yes	No
	171033	Tri-Band Strap IS (HMT-1Z1®)	\$ 25.00	No	Yes	Yes
	127041	Overhead Band (RealWear Navigator™ 500 Series, HMT-1®) <b>NEW</b>	\$ 125.00	Yes	Yes	No
	127137	Hard Hat Band <b>NEW</b>	\$ 60.00	Yes	Yes	No
	127138	Hard Hat Band IS <b>NEW</b>	\$ 60.00	No	No	Yes
	171056	MSA Hard Hat with RW Logo	\$ 30.00	Yes	Yes	Yes
	171020	Hard Hat Clips for MSA Front Brim (3 Pair Pack)	\$ 25.00	No	Yes	Yes
	171024	Hard Hat Clips for MSA Full Brim (3 Pair Pack)	\$ 25.00	No	Yes	Yes
	127120	MSA Front Brim Hard Hat Clips	\$ 25.00	Yes	Yes	No
	127124	MSA Full Brim Hard Hat Clips	\$ 25.00	Yes	Yes	No
	127147	MSA Front Brim Top Mount Clips - Left Eye User (3 Pairs)	\$ 30.00	Yes	Yes	No
	127148	MSA Front Brim Top Mount Clips - Right Eye User (3 Pairs)	\$ 30.00	Yes	Yes	No
	127151	3M TA500 Hard Hat Clips (3 Pairs)	\$ 25.00	Yes	Yes	No
	127102	Universal Japanese Hard Hat Clips (3 Pairs)	\$ 90.00	Yes	Yes	No
	127139	Clips for Petzl Professional - Left Eye User (3 Pair Pack) <b>NEW</b>	\$ 40.00	Yes	Yes	No
	127340	Clips for Petzl Professional - Right Eye User (3 Pair Pack) <b>NEW</b>	\$ 40.00	Yes	Yes	No
Power & Battery	12711	USB Power Adapter Quick Charge 3.0 (Regional variants available)	\$ 25.00	Yes	Yes	No
	171016	USB Type-C Charging Cable	\$ 13.00	Yes	Yes	No
	171019	USB Cable with Charging Protection (HMT-1Z1® only)	\$ 100.00	No	No	Yes
	127107	Single Battery Charger	\$ 35.00	Yes	No	No
	127105	4x Multi-battery Charger (RealWear Navigator™ 500 only) <b>NEW</b>	\$ 195.00	Yes	No	No
	127108	Single Battery Pack	\$ 86.00	Yes	No	No
	171010	Spare Battery (HMT-1® only)	\$ 50.00	No	Yes	No
	171014	Spare Battery (6 pack) (HMT-1® only)	\$ 280.00	No	Yes	No
	171013	6 Battery Multi Charger (HMT-1® only)	\$ 180.00	No	Yes	No
	170001	Battery Cap with O-ring	\$ 6.00	No	Yes	No

Category	SKU	Product	MSRP	Compatibility		
				RealWear Navigator™ 500 Series	HMT-1	HMT-1Z1
Headphones	171030	Pro Buds IS Hearing Protection Headphones	\$ 120.00	Yes	Yes	Yes
	127126	Pro Buds IS Hearing Protection Headphones with in-ear Microphone	Coming Soon	Yes	Yes	Yes
	171059	Ear Bud Foam Tips Small Medium Large (sample Pack)	\$ 26.00	Yes	Yes	Yes
	171040	Replacement Ear Bud Foam Tips (10 Pairs) - Small	\$ 65.00	Yes	Yes	Yes
	171041	Replacement Ear Bud Foam Tips (10 Pairs) - Medium	\$ 65.00	Yes	Yes	Yes
	171042	Replacement Ear Bud Foam Tips (10 Pairs) - Large	\$ 65.00	Yes	Yes	Yes
	171058	Wind Noise Filter (3 pairs)	\$ 20.00	Yes	Yes	Yes
Camera	127122	Camera Port Cover	\$ 50.00	Yes	No	No
	171009	Camera Privacy Sticker (6-pack)	\$ 5.00	No	Yes	Yes
Connectivity	173004	LTE 4G Modem (ZTE) w/ cable & mount	\$ 120.00	No	Yes	No
	173005	LTE 4G Modem (JACS) with cable & mount	\$ 200.00	No	Yes	No
	127136	Mini LTE Modem & Mount (RealWear Navigator™ 500)	\$ 250.00	Yes	No	No
	171037	Folding Bluetooth Keyboard and Touchpad	\$ 75.00	Yes	Yes	Yes
Miscellaneous	171012	Semi Rigid Carrying Case	\$ 45.00	No	Yes	Yes
	127109	Protective Carrying Case (RealWear Navigator™ 500 only)	\$ 45.00	Yes	No	No
	171043	64GB MicroSD Card	\$ 45.00	Yes	Yes	Yes
	171049	256GB MicroSD Card	\$ 200.00	Yes	Yes	Yes
	171038	MicroSD Card Screwdriver	\$ 5.00	Yes	Yes	Yes



# REALWEAR MOUNTING SOLUTIONS

Get the most from your RealWear device with mounts, straps, clips, and hard hats so you always find the right fit.



SKU: 127125

## WORKBAND 2

### For RealWear Navigator™ 500 Series and HMT-1®

New slimmer, lighter weight band, that provides a secure mount and comfortable fit when hard hats are not required. Designed for comfort and fit for full-shift use.

**MSRP: \$40.00 USD**



**SKU: 127104**

## REALWEAR BALL CAP WITH MOUNTS

### For RealWear Navigator™ 500 Series and HMT-1®

These purpose-built ball caps are designed with special mounting clips for select RealWear devices. Each cap is designed for maximum comfort, balance, and visibility and contains a semi-flexible inner band and clips. The cap's brim is ideal for sunny locations without occluding the adjustable high-resolution camera.

- High-quality
- Lightweight / Durable / Smooth
- Adjustable Velcro back
- Brim designed for full camera visibility
- Built-in clips and inner band

**MSRP: \$40.00 USD**

## BUMP CAP

### For RealWear Navigator™ 500 Series and HMT-1®

Suitable for environments that require head cover but do not require hard hats. The short brim also provides shade without interfering with the device.

NOTE: The Bump Cap requires the triband strap for mounting



**Standard**

**SKU: 171034**

**MSRP: \$40.00 USD**

**Extra Large**

**SKU: 171095**

**MSRP: \$42.50 USD**



SKU: 171035-A

## FLEXBAND

3-POINT SILICONE BAND WITH CHINSTRAP  
FOR CLEAN ROOMS

For RealWear Navigator™ 500  
and HMT-1®

Designed for use in clean room environments including biopharma, textile mills and other use cases. The flexband is a non-shedding solution. Product color may vary.

MSRP: \$75.00 USD

## OVERHEAD STRAP (6-PACK)

For HMT-1® and HMT-1Z1®.  
Intrinsically safe (IS approved)  
for use with the HMT-1Z1® in  
hazardous locations.

Strap is worn with the device when a hard hat, bump cap, or Tri-Band Strap is not used. With regular use, wear and tear of the strap is normal and it is designed to be replaced periodically.

MSRP: \$30.00 USD



SKU: 171018



**SKU: 127100**

## TRI-BAND STRAP

### For RealWear Navigator™ 500 Series and HMT-1®

The Tri-Band Strap supports greater maneuverability and mobility and ensures superior fit and positioning of the device over a wider range of helmet and bump cap shapes. The Tri-Band Strap replaces the standard overhead Strap for a more secure fit.

**MSRP: \$25.00 USD**

## TRI-BAND STRAP IS

**For HMT-1Z1®. Inherently safe (IS approved) for use with the HMT-1Z1® in hazardous locations. Needed to mount the HMT-1® when wearing a bump cap or baseball cap.**

Supports greater maneuverability and mobility and ensures superior fit and positioning of the device over a wider range of head sizes and shapes. The Tri-Band Strap replaces the standard overhead Strap for a more secure fit.

**MSRP: \$25.00 USD**



**SKU: 171033**





**SKU: 127041**

**MSRP: \$125.00 USD**

## OVERHEAD BAND

NEW

### For RealWear Navigator™ 500 Series and HMT-1®

The Overhead Band offers the user a secure, lightweight head-mounting solution in a familiar form-factor. We designed this in response to requests for a mount that is lightweight, cool, and secure.

The Overhead Band resembles the headband on premium headphones. Users quickly understand how to wear and position the RealWear Navigator™ 500. The optional occipital band further secures the device to the head which is important when leaning forward.

- Designed for the RealWear Navigator™ 500 (Compatible with the HMT-1)
- Memory foam comfort pads on top of head and both sides
- Adjustable for most head sizes
- Overhead band sliders
- Optional Occipital band for added stability (“trucker cap” adjustments)
- Device may be mounted for left or right eye dominance
- Lightweight: 49g

## HARD HAT BAND

NEW

### For RealWear Navigator™ 500 Series and HMT-1®

The RealWear Hard Hat Band solves the issue of how to mount a RealWear head-mounted tablet to your choice of safety helmet.

- The rubber helmet band stretches to fit most hard hats and helmets (does not fit on full brim helmets)
- The optional band clips hold the hat band down and prevent it from slipping off
- Supports bias mounting required by larger helmets for optimal display pod positioning

Note: the hard hat band is not compatible with helmet-mounted earmuffs

- The Hard Hat Band SKU consists of:
- Rubber Helmet Band
- Universal Hat Clips
- Band Clips (optional)



**SKU: 127137**

**MSRP: \$60.00 USD**

## HARD HAT BAND IS NEW

### For HMT-1Z1®

The RealWear Hard Hat Band solves the issue of how to mount a RealWear head-mounted tablet to your choice of safety helmet.

- The rubber helmet band stretches to fit most hard hats and helmets (does not fit on full brim helmets)
- The optional band clips hold the hat band down and prevent it from slipping off
- Supports bias mounting required by larger helmets for optimal display pod positioning

Note: the hard hat band is not compatible with helmet-mounted earmuffs

- The Hard Hat Band SKU consists of:
- Rubber Helmet Band
- Universal Hat Clips
- Band Clips (optional)

**MSRP: \$60.00 USD**



**SKU: 127138**



**SKU: 171056**

## MSA V-GARD® FRONT BRIM HARD HAT WITH REALWEAR LOGO

**For RealWear Navigator™ 500 Series, HMT-1® and HMT-1Z1®. Intrinsically safe (IS approved) for use with the HMT-1Z1 in hazardous locations.**

Standard size MSA hard hat with Fas-Trac® III suspension and ratchet adjustment. White with black RealWear logo.

Hard Hat Clips sold separately

**MSRP: \$30.00 USD**

## HARD HAT CLIPS FOR MSA FRONT BRIM

### For RealWear Navigator™ 500 Series and HMT-1®

Hard Hat Clips are custom designed to secure specific RealWear devices to MSA Front Brim hard hat.

They clip into the hard hat accessory slots. Order the correct clips for the hard hats in use.

**MSRP: \$25.00 USD**



**(3pk) SKU: 127120**



**(3pk) SKU: 171021**

## HARD HAT CLIPS FOR HONEYWELL NORTH ZONE FRONT BRIM

### For RealWear HMT-1® and HMT-1Z1®

Hard Hat Clips are custom designed to secure specific RealWear devices to Honeywell North Zone Front Brim hard hat.

They clip into the hard hat accessory slots. Order the correct clips for the hard hats in use.

**MSRP: \$25.00 USD**

## HARD HAT CLIPS FOR MSA FULL BRIM (3 PAIR PACK)

### For RealWear HMT-1® and HMT-1Z1®

Hard Hat Clips are custom designed to secure specific RealWear devices to MSA Full Brim hard hat.

They clip into the hard hat accessory slots. Order the correct clips for the hard hats in use.

**MSRP: \$25.00 USD**



**SKU: 171024**



**SKU: 127124**

## HARD HAT CLIPS FOR MSA FULL BRIM (3 PAIR PACK)

### For RealWear Navigator™ 500 and HMT-1®

Hard Hat Clips are custom designed to secure specific RealWear devices to MSA Full Brim hard hat.

They clip into the hard hat accessory slots. Order the correct clips for the hard hats in use.

**MSRP: \$25.00 USD**

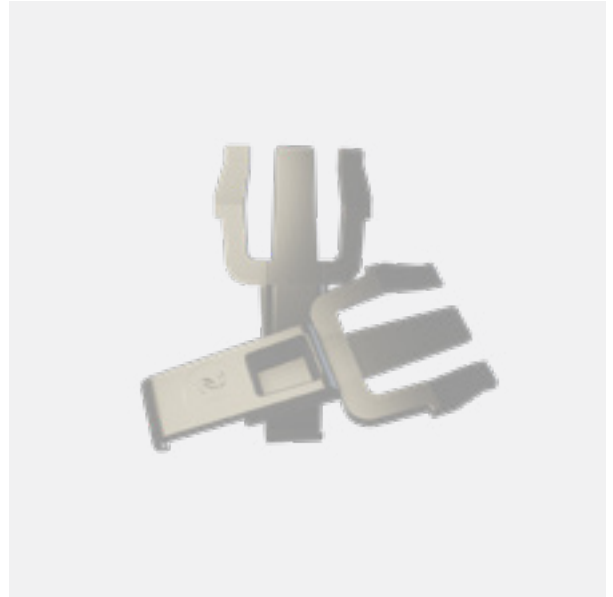
## HARD HAT CLIPS FOR HONEYWELL NORTH ZONE FULL BRIM (3 PAIR PACK)

### For RealWear HMT-1® and HMT-1Z1®

Hardhat Clips are custom designed to secure specific RealWear devices to Honeywell North Zone Full Brim hard hat.

These clips clip into the hard hat accessory slots. Order the correct clips for the hard hats in use.

**MSRP: \$25.00 USD**



**SKU: 171046**



**SKU: 127147**

## MSA FRONT BRIM TOP MOUNT CLIPS - LEFT EYE USER

### For RealWear Navigator™ 500 Series and HMT-1®

Top mount clips for front brim style hardhats for use with behind-the-neck style earmuffs to improve sound. For left eye dominant users specifically using the MSA hardhat.

These clips clip into the hard hat accessory slots. Order the correct clips for the hard hats in use.

**MSRP: \$30.00 USD**

## MSA FRONT BRIM TOP MOUNT CLIPS - RIGHT EYE USER

(3 PAIRS)

### For RealWear Navigator™ 500 Series and HMT-1®

Top mount clips for front brim style hard hats for use with behind-the-neck style earmuffs to improve the sound. For right eye dominant users specifically using the MSA hard hat.

They clip into the hard hat accessory slots. Order the correct clips for the hard hats in use.

**MSRP: \$30.00 USD**



**SKU: 127148**



**SKU: 127151**

## 3M TA500 HARD HAT CLIPS

(3 PAIRS)

### For RealWear Navigator™ 500 Series, HMT-1®

Top mount clips for popular UK style front brim for the 3M TA500 hard hat.

They clip into the hard hat accessory slots. Order the correct clips for the hard hats in use.

**MSRP: \$25.00 USD**

## UNIVERSAL JAPANESE HARD HAT CLIPS (3 PAIRS)

### For RealWear Navigator™ 500 Series, HMT-1®

Realwear's custom clip for many Japanese hard hats.

They clip into the hard hat accessory slots. Order the correct clips for the hard hats in use.

**MSRP: \$90.00 USD**



**SKU: 127102**



**SKU: 127139**

## CLIPS FOR PETZL PROFESSIONAL - LEFT EYE USER (3 PAIR PACK)

**NEW**

### For RealWear Navigator™ 500 Series and HMT-1®

Helmet clips designed for the Petzl Professional line of helmets.

**MSRP: \$40.00 USD**

**CLIPS FOR PETZL  
PROFESSIONAL -  
RIGHT EYE USER**  
(3 PAIR PACK)

**NEW**

**For RealWear Navigator™ 500  
Series and HMT-1®**

Helmet clips designed for the Petzl  
Professional line of helmets.

**MSRP: \$40.00 USD**



**SKU: 127140**





# REALWEAR POWER SOLUTIONS

Get the most from your RealWear devices with accessories that help you stay productive throughout your shift such as replacement batteries, wall and battery chargers, and cables for your IS devices.



## USB POWER ADAPTER QUICK CHARGE 3.0

For RealWear Navigator™ 500 Series.  
Compatible with HMT-1® and HMT-1Z1®  
units but without fast charging.

SKU	Region
127111	USA
127112	EU
127115	UK
127116	Australia

MSRP: \$25.00 USD



**SKU: 171016**

## USB TYPE-C CHARGING CABLE

### For RealWear Navigator™ 500 Series and HMT-1®

USB Type-C cable for charging the device needed if there are multiple charging locations (eg. office, workstation, tool crib, service vehicle). They also minimize downtime in case a charger is ever misplaced.

\*Includes a Micro-USB adapter for data transfer.

**MSRP: \$13.00 USD**

## USB CABLE WITH CHARGING PROTECTION

### Compatible with the HMT-1Z1® but not Intrinsically Safe. Can be used with the HMT-1Z1® outside of hazardous locations.

The USB Cable with Charging Protection is an extra Micro-USB cable for data transfer and charging. The cable includes a safety box that protects the devices' safety circuits from power surges that can damage and may occur when connecting the HMT1-Z1 to computers, wall chargers, car chargers, and other power sources. It is the only cable approved for charging and for moving files to and from the HMT-1Z1®.

**MSRP: \$100.00 USD**



**SKU: 171019**



**SKU: 127107**

## SINGLE BATTERY CHARGER

### For RealWear Navigator™ 500 Series

Charge a spare battery for your RealWear Navigator™ 500 Series device.

**MSRP: \$35.00 USD**

## 4X MULTI-BATTERY CHARGER NEW

### For RealWear Navigator™ 500 Series

- Charges up to 4 RealWear Navigator™ 500 Battery Packs
- Can charge from 5 to 99% in approximately 2 hours
- Mounting holes for affixing to wall or desk
- USB C to C Cable, 1.5m included
- REQUIRES a PD Charger, 9V / 4A or 12V / 3A output (not included)

**MSRP: \$195.00 USD**



**SKU: 127105**



**SKU: 127108**

## SINGLE BATTERY PACK

### For RealWear Navigator™ 500 Series

Keep working with a spare battery for your RealWear Navigator™ 500 Series device.

**MSRP: \$86.00 USD**

## SINGLE BATTERY

### For HMT-1®

Extra lithium-ion battery for the HMT-1®. Batteries can be swapped in the field to extend operating time and minimize downtime.

**MSRP: \$50.00 USD**



**SKU: HMT-1® 171010**



**SKU: 171014**

## SPARE BATTERY (6-PACK)

### FOR HMT-1®

EXTRA LITHIUM-ION BATTERIES FOR THE HMT-1®. BATTERIES CAN BE SWAPPED IN THE FIELD TO EXTEND OPERATING TIME AND MINIMIZE DOWNTIME AND COVER EXTRA SHIFTS.

**MSRP: \$280.00 USD**

## 6 BATTERY MULTI-CHARGER

### FOR HMT-1® ONLY

Simultaneously charges 6 HMT-1® batteries and ensures fully charged batteries are available at the start of each shift. The charge level of each battery is shown on a high visibility backlit display, so battery levels can be determined at a glance. Ships with all 5 regional power adapters. Shown with batteries, not included.

**MSRP: \$180.00 USD**



**SKU: 171013**



SKU: 170001

## BATTERY CAP WITH O-RING

**For HMT-1® only**

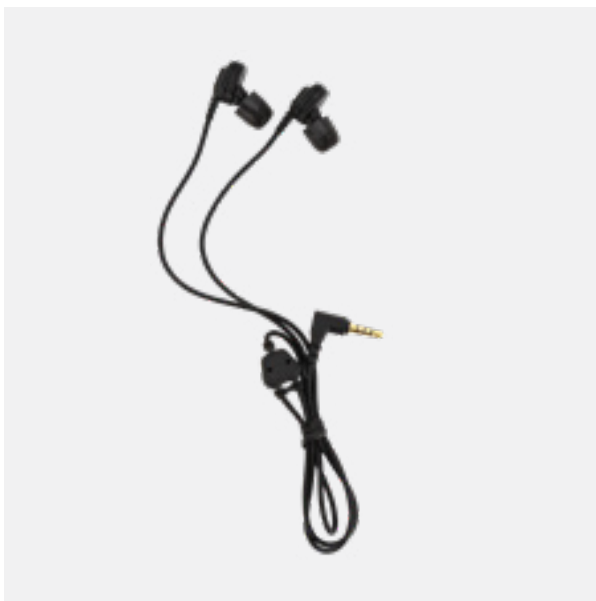
Replacement battery cap for HMT-1®.

**MSRP: \$6.00 USD**



# REALWEAR AUDIO ACCESSORIES

Get the most from your RealWear device with audio accessories that help you reduce noise and communicate even in noisy environments.



SKU: 171030

## PROBUDS IS HEARING PROTECTION HEADPHONES

**For RealWear Navigator™ 500 Series, HMT-1® and HMT-1Z1®. Inherently safe (IS certified) when used with the HMT-1Z1®.**

Listen to audio while protecting hearing in high noise environments. Comes with replaceable medium foam tips made of premium memory foam and are 33dB NRR (Noise Reduction Rated). Provides privacy and optimal experience when using remote video applications. Designed with a custom cable length and right-angle connector. Comes with a pair of medium foam tips; other sizes are available separately.

**MSRP: \$120.00 USD**



## EAR BUD FOAM TIPS

**For RealWear Navigator™ 500, HMT-1® and HMT-1Z1®. Inherently safe (IS approved) for use with the HMT-1Z1 in hazardous locations.**

The Ear Bud Foam Tips are replaceable foam tips for the Ear Bud Hearing Protection Headphones. They are made of premium memory foam and are available in 3 different sizes. Each headphone comes with a pair of Medium foam tips. With regular use, wear and tear of the foam tips are normal and they are designed to be replaced periodically.

SKU	TYPE	SIZE	MSRP (USD)
171040	Ear Bud Foam Tips (10 Pair Pack)	Small	\$50.00
171041	Ear Bud Foam Tips (10 Pair Pack)	Medium	\$50.00
171042	Ear Bud Foam Tips (10 Pair Pack)	Large	\$50.00
171059	Ear Bud Foam Tips (Sample Pack)	S / M / L	\$20.00



SKU: 171058

## WIND NOISE FILTERS (3 PAIR PACK)

**For RealWear Navigator™ 500 series, HMT-1® and HMT 1-Z1®**

Designed to minimize audible wind noise in the RealWear Navigator™ 500 Series, HMT-1 and HMT-1Z1. Reduces low frequency 'bass', often described as rumble. Helps to improve the clarity of the recording, accuracy of the voice recognition system in windy environments, thereby extending functionality into more environments.

**MSRP: \$20.00 USD**





# REALWEAR CAMERA ACCESSORIES

Get the most from your device with camera accessories that expand your capabilities.

## CAMERA PORT COVER

### For RealWear Navigator™ 500 Series

Cover for camera port for use in environments where cameras are not allowed

**MSRP: \$50.00 USD**



**SKU: 127122**



SKU: 171009

## CAMERA PRIVACY STICKERS (6-PACK)

### For HMT-1®

Cameras are not authorized for use in certain environments. This new solution is a great alternative solution to our camera cover 3D reference design download.

Reflective vinyl sticker designed to fully cover the camera lens as required for privacy compliance. Adheres securely onto the camera lens while allowing use of the built-in flashlight\*

\*Sold by the sheet containing 6 stickers.

**MSRP: \$5.00 USD**



# REALWEAR CONNECTIVITY ACCESSORIES

Get the most from your RealWear devices with accessories that help you stay connected even when not in Wi-Fi range.

## MINI LTE MODEM & MOUNT REALWEAR NAVIGATOR™ 500 SERIES

NEW

### For RealWear Navigator™ 500 Series

The Mini LTE Modem is a sleek, custom designed 4G modem that plugs into the USB-C port and mounts onto the device frame with the enclosed strap. With a Nano SIM card (not included), users can connect to cellular internet in places without Wi-Fi.

#### Features/Benefits:

- Provides the user cellular access in remote areas
- IP66 dust and rain protection
- Specifically designed form factor for sleek integration with Real Wear products.
- Nano SIM card connects you to secure, reliable internet.
- Sleek, modern design integrates aesthetically with your device.
- Custom length USB-C cable reduces snag risk while in use.

**MSRP: \$250.00 USD**



**SKU: 127136**

## LTE 4G MODEM (ZTE) WITH CABLE & MOUNT\*

### For HMT-1® Only

Creates 4G cellular connection, plugs into the micro-USB port, and uses a Micro-SIM card (not included). Works with multiple regional cellular networks.

### Features and Benefits:

- 4G connection to information, enabling off-network productivity and collaboration.
- Front cover slides off to reveal Micro-SIM card slot.
- Global frequency band covers more than 100 countries and regions.
- Indicator light shows network connection status.
- Plastic Side Mount connects modem to HMT via micro-USB cable.

### Technical Specs:

- Supported Bands LTE-FDD B1/2/3/4/5/7/8/12&B17/20, UMTS B1/2/4/5/8, GSM 850/900/1800/1900.
- Qualcomm MDM9X07 chipset, 1.2 GHz. 3FF SIM, 3V SIM card and 1.8V SIM card. Memory (SDRAM/NAND): 128MBytes/256Mbytes. Micro SDHC, 2G~32GByte Capacity, SD 2.0 Class 6.
- RF chipset WTR2955, 4G LTE Download Speed to 150Mbps and upload speed to 50Mbps (Category 4), Internal antenna.
- Supports Windows 10, Mac OS, Linux, Android. GPRS class B. Modem uses Micro-SIM Card.
- ZTE MF833V 4G LTE Mobile USB Modem Dongle.

### Product Contents:

- ZTE 4G Modem
- HMT side mount
- USB to micro-USB cable
- USB to USB-C cable
- Note: Micro-SIM not included.

\*Sold as a kit made of multiple components

**MSRP: \$120.00 USD**



**SKU: 173004**



## LTE 4G MODEM (JACS) WITH CABLE & MOUNT

### For HMT-1® Only

Stay connected to the internet even in areas without Wi-Fi using LTE (Nano SIM not included)

The LTE Modem is an accessory for the HMT-1 that creates a 4G cellular link. The Modem attaches securely to the HMT battery-side and connects via micro-USB or USB-C (compatible with model T1100G and T1200G via a cable pack that includes adapters.) Using a Micro-SIM card (not included), a customer can access multiple regional cellular networks.

**MSRP: \$200.00 USD**

**SKU: 173005**

### Modem Details

- Modem does NOT work on all carriers. Check your local network. Some Verizon, Sprint, Net10, or any CDMA Carriers are not compatible.
- Supported Bands LTE-FDD B1/2/3/4/5/7/8/12/14/17/20/66, LTE-TDD: B38/39/40/41, HSPA B1/2/4/5/8, GSM 850/900/1800/1900
- SIM 4FF, Nano-SIM
- MicroSD YES, 32GB
- Qualcomm MDM 9X07 chipset: 128MBytes/256Mbytes.
- 4G LTE Download Speed to 150Mbps and upload speed to 50Mbps
- Supports Windows 10, Mac OS, Linux, Android. GPRS class B. Modem uses Micro-SIM Card.
- FARS compliant  
(See manufacturer website for additional carrier and compatibility details.)



# OTHER ACCESSORIES

Get the most from your RealWear devices with accessories that make it easy to protect your investment.

## FOLDING BLUETOOTH KEYBOARD & TOUCHPAD

**For use with RealWear Navigator™ 500 Series, HMT-1®, and HMT-1Z1®.**

This handy folding wireless keyboard and trackpad helps eliminate the need for bringing along your tablet or clipboard into the field to enter a larger amount of text or data.

After the initial pairing process is complete, simply unfold the keyboard and it will pair automatically. Also, a mouse cursor appears like it would with a handheld Android tablet. A carrying bag and USB charging cable is included.

**The Folding Bluetooth Keyboard & Trackpad is recommended for:**

- Field Operators and Field Engineers required to input or log lengthy field notes or conversations
- Where select and drag mouse/cursor functionality is needed
- Sensitive environments where speaking out loud would be inappropriate

**MSRP: \$75.00 USD**



**SKU: 171037**

### Technical Features:

- Durable aluminum body
- Portable form factor, keys are only 90% the size of any standard keys
- Pocket Size, similar size to the iPhone X Plus
- Lightweight, only 7 ounces
- 60 hours working time and 90 days standby time
- Connects up to 3 devices



**SKU: 171012**

## SEMI-RIGID CARRYING CASE

**For use with HMT-1® and HMT-1Z1®**

EVA molded case with zip closure for storing device and select accessories. Whether transporting or storing, it provides protection from the elements and from daily wear and tear. Shown with HMT-1, not included.

**MSRP: \$45.00 USD**

## PROTECTIVE CARRYING CASE

**For use with RealWear Navigator™ 500**

EVA molded case designed for the RealWear Navigator™ 500 with a slimmer profile, zip closure for storing device and select accessories. Whether transporting or storing, it provides protection from the elements and from daily wear and tear. Device not included.

**MSRP: \$45.00 USD**



**SKU: 127109**



SKU: 171017

## REAR PAD (6-PACK)

**For use with HMT-1® and HMT-1Z1®. Inherently safe (IS approved) for use with the HMT-1Z1 in hazardous locations.**

Replacement for the standard cushioned pad that comes with the device and attaches to the interior band. With regular use, wear and tear of the pad is normal and may need to be replaced periodically.

**MSRP: \$50.00 USD**

## MICROSD CARD SANDISK EXTREME®

**For use with RealWear Navigator™ 500 Series, HMT-1®, and HMT-1Z1®.**

Expands the HMT-1's internal storage for additional photos, videos, and applications. 64GB capacity provides an extra 8+ hours of video recording at 1080 full HD, 128GB provides an extra 16+ hours, and 256GB provides an extra 32+ hours. The card meets UHS Speed Class 3 (U3) and Video Speed Class 30 (V30) for fast capture and transfer speeds (30MB/s minimum sustained write speed and 90MB/s max read speed) and has a microSDXC form factor.

**Includes:**

- SanDisk Extreme® microSD™ Card
- SanDisk microSD to SD memory card adapter



SKU	TYPE	MSRP (USD)
171043	MicroSD Card (64GB SanDisk Extreme®) - both HMT-1 & HMT-1Z1, and RealWear Navigator™ 500	\$45.00
171049	MicroSD Card (256GB SanDisk Extreme®) - for HMT-1 and RealWear Navigator™ 500	\$200.00





**SKU: 171038**

## **MICROSD CARD SLOT DOOR SCREWDRIVER**

**For use with RealWear Navigator™500 Series, HMT-1®, and HMT-1Z1®.**

This #00 Phillips screwdriver is required to access your MicroSD card slot to expand the memory of your device. It features a special grooved grip for your thumb and forefinger for the easy task of accessing the memory slot of the device. This screwdriver is extremely lightweight and small so you can carry it with you anywhere your device goes. If you don't already carry this screwdriver with you for your regular job, we recommend adding this to your purchase for the convenience of having it with your device specifically.

**MSRP: \$5.00 USD**