

Samsung Monitors for Professionals



About Samsung Electronics Co., Ltd.

Samsung Electronics Co., Ltd. inspires the world and shapes the future with transformative ideas and technologies. The company is redefining the worlds of TVs, smartphones, wearable devices, tablets, digital appliances, medical equipment, network systems, and semiconductor and LED solutions. For the latest news, please visit the Samsung Newsroom at news.samsung.com.

For more information

For more information about Samsung Monitors, visit www.samsung.com/business.

Copyright © 2025 Samsung Electronics Co., Ltd. All rights reserved. Samsung is a registered trademark of Samsung Electronics Co., Ltd. Specifications and designs are subject to change without notice. Non-metric weights and measurements are approximate. All data were deemed correct at time of creation. Samsung is not liable for errors or omissions. All brand, product, service names and logos are trademarks and/or registered trademarks of their respective owners and are hereby recognized and acknowledged.

Samsung Electronics Co., Ltd.
129, Samsung-row, Yeongtong-gu, Suwon-si, Gyeonggi-do, 16677 Republic of Korea

Table of Contents

01

About Samsung

| | |
|----------------------|----|
| Samsung Global Brand | 06 |
| One Samsung | 08 |

02

Monitor Essentials

| | |
|----------------------------------|----|
| Screen Size | 12 |
| Resolution | 14 |
| Multitasking & Connections | 16 |
| Work Comfort | 18 |
| Samsung Monitors Meet Every Need | 20 |

03

Picks for Your Business

| | |
|--------------------------------------|----|
| Business Overview | 26 |
| Creative & Visual Design | 28 |
| Engineering & Technical Development | 30 |
| Data Analysis & Financial Services | 32 |
| Administration & Business Operations | 34 |

04

Product Highlights

| | |
|----------------------|----|
| Features at a glance | 38 |
| ViewFinity S9 | 40 |
| ViewFinity S8 | 44 |
| ViewFinity S6 | 50 |
| Essential Monitor S4 | 62 |

About Samsung

Samsung Global Brand
One Samsung

06
08



Global brand, human focus.

Across the 74 countries we operate in, we put people and their needs at the center of everything we do and create within our 32 production sites. By consistently defying barriers to make a better world for all, we've built a top five best global brand—helping people do what they never thought they could through quality, design and reliability.



YouGov
Best Global Brands 2025
 #1 Global Brand:
Samsung





YouGov
No.1 best global brand 2025 ¹⁾


Interbrand
 Best Global Brands 2024





Interbrand
 No.5 best global brand 2024 ²⁾


 **267K+**
 Employees

 **76**
 Countries

 **KRW 75.8tn ³⁾**
 Revenue

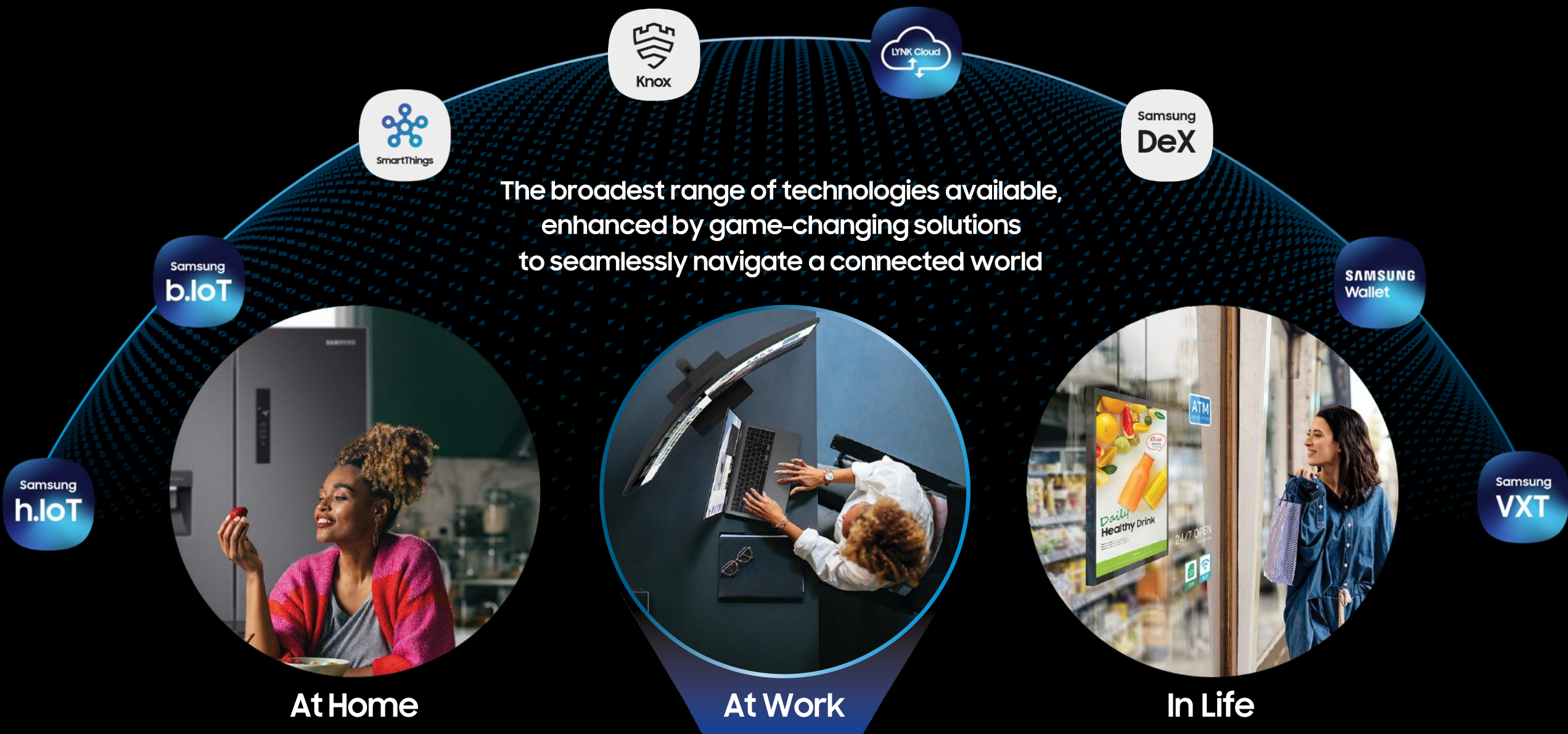
 **40**
 R&D centres

 **7**
 Design centres

 **32**
 Production sites

1) <https://news.samsung.com/global/samsung-tops-yougovs-best-global-brands-2025-rankings>
 2) <https://news.samsung.com/global/samsung-electronics-ranked-as-a-top-5-global-brand-for-the-fifth-consecutive-year-with-100-8-billion-in-brand-value>
 3) Samsung Electronics reported financial results for the fourth quarter and the fiscal year 2024. <https://news.samsung.com/global/samsung-electronics-announces-fourth-quarter-and-fy-2024-results#:~:text=Samsung%20Electronics%20today%20reported%20financial,quarter%20ended%20December%2031%2C%202024.>

One connected ecosystem. One Samsung.



Jet Bot Vacuums

HTV Hospitality TV

LCD Displays

LED Displays

Refrigerators

Air Dressers

Monitors for Professionals

Air Conditioners

System Air Conditioners

Clean Air Purifier

Harman Pro Audio

Interactive Displays

Mobiles and tablets

Notebooks

Televisions

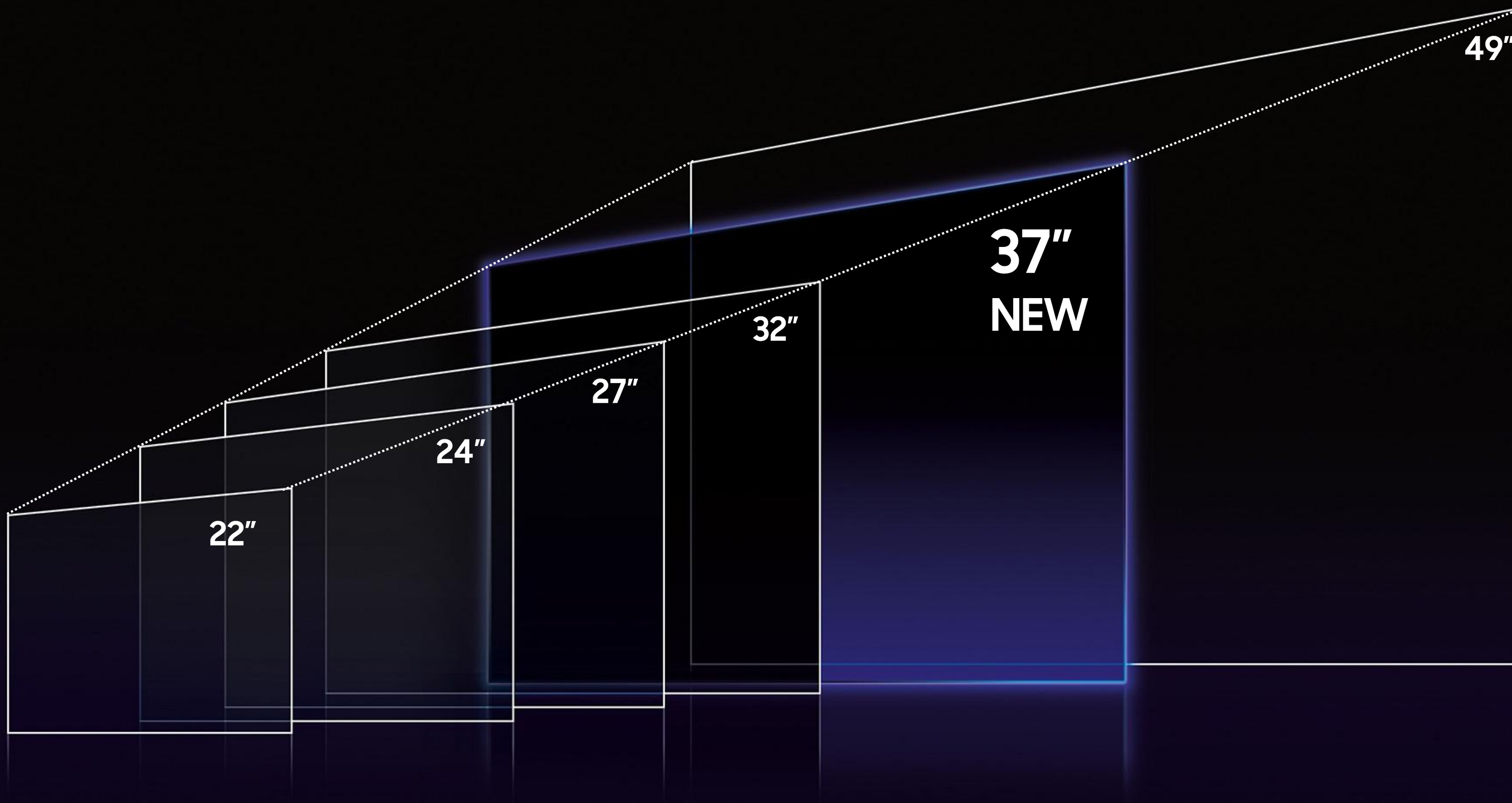
Monitor Essentials

| | |
|----------------------------------|----|
| Screen Size | 12 |
| Resolution | 14 |
| Multitasking & Connections | 16 |
| WorkComfort | 18 |
| Samsung Monitors Meet Every Need | 20 |



Scaling screens

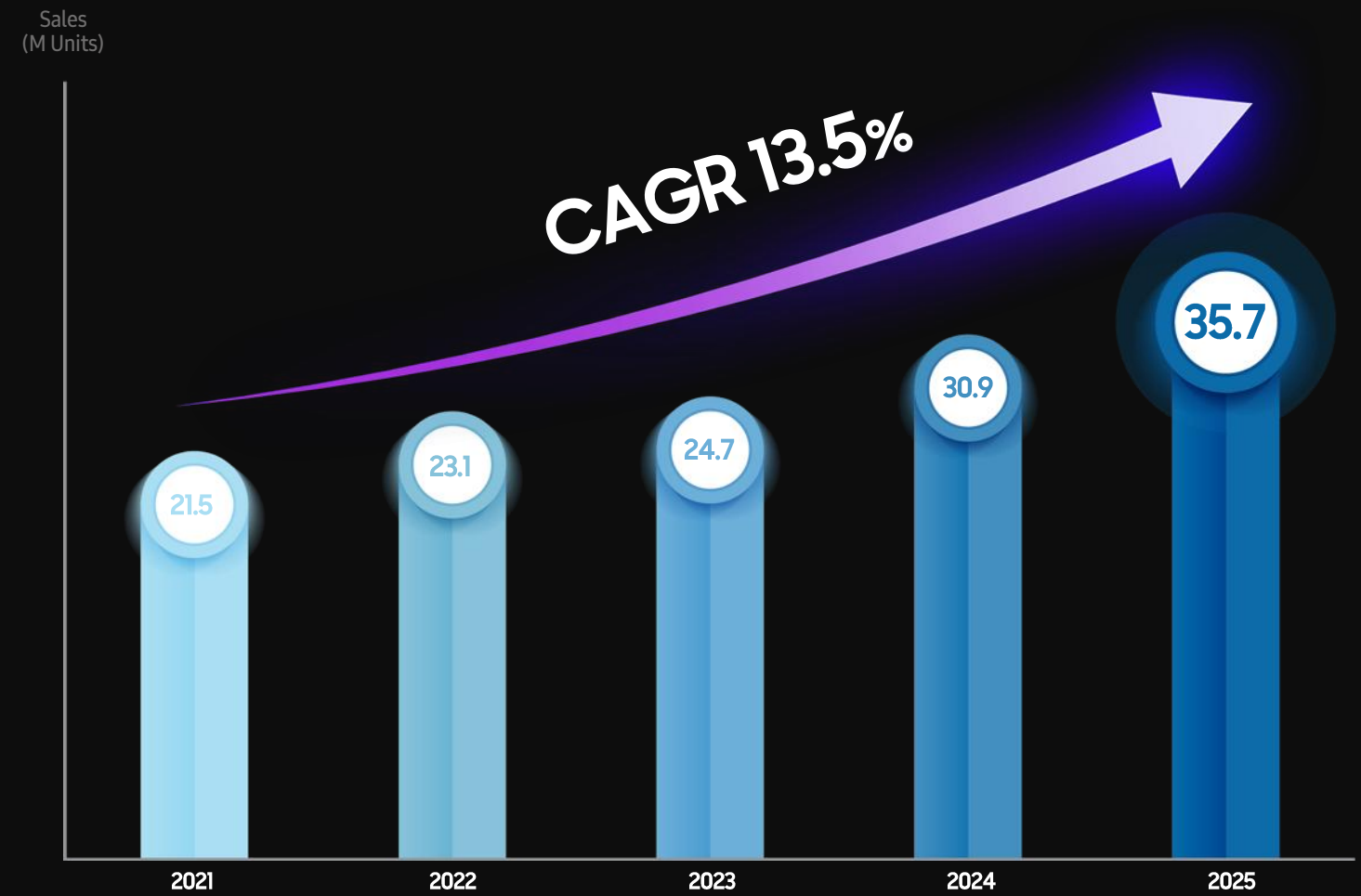
The demand for more screen space is snowballing, as people look to make multitasking easier. Meanwhile, Samsung has launched the world's first 37-inch monitor*, expanding the range of options for people to choose their screen size.



* 37" UHD monitor.

Rising Resolution

Screen resolution is rising to higher levels. With diverse options, working professionals across industries can select a monitor that addresses their daily needs and enhances their experience. Sales of high-resolution screens have risen by an average of 13.5% each year from 2021 to 2025.



* High resolution screen is QHD+ Resolution.
 * Sell in data from all manufactures reported by IDC_Monitor_History_25Q2_R2 (~'24) + IDC PC Monitor Tracker_ForecastPivot_2025Q2_SamsungVD ('25 F'cst)

Multitasking made easy

As work grows more complex, professionals often need to handle multiple tasks across different devices at once. Consequently, there is a growing demand for environments that facilitate seamless connectivity between devices and support multiple ports.



* This graphic illustrates power charging for a Notebook, mobile, and tablet. Storage devices require a separate cable. The keyboard and mouse are connected via Bluetooth.

Work Comfort

Long work sessions can lead to eye fatigue and poor posture, making tasks more tiring and less productive. Therefore, Screens should be designed with ergonomic considerations.



Samsung Monitors Meet Every Need

Screen, resolution, multitasking, work comfort, and everything else considered from Samsung Monitors.

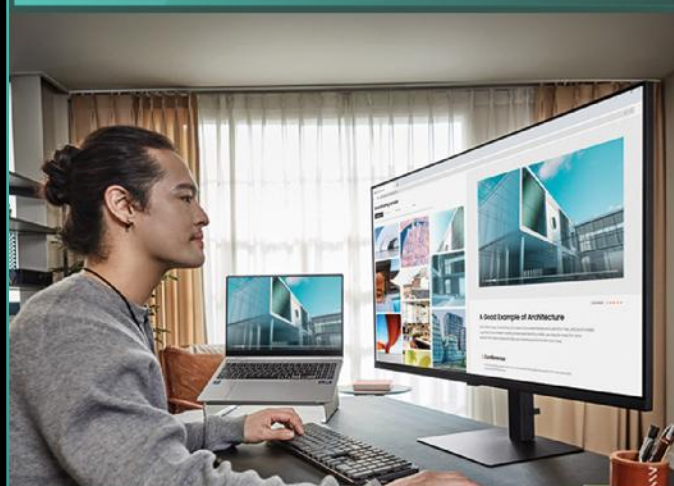
Clarity



Choose from a wide range of resolutions and enjoy vibrant, accurate colors that bring every detail to life.

- Various resolutions (FHD/QHD/UHD/5K)
- Color support (Up to 1.07B colors)
- 100Hz ↑ Refresh Rate ¹⁾

Productivity



With diverse form factors and versatile connectivity to enhance how you create, connect, and get things done.

- Form factor (Flat /Curved, 16:9/21:9/32:9 screen ratio)
- Connectivity (USB-C, Thunderbolt, LAN, DP, Daisy Chain)
- Multitasking tools (PBP, PIP, KVM Switch, Samsung Display Manager)

Comfort



Your best work comes from feeling good. Monitors are designed to reduce eye strain and optimize comfort.

- Eye comfort (Eye saver mode, Flicker free, Adaptive picture)
- Ergonomic stand (HAS/Tilt/Swivel/Pivot/VESA)
- Easy Setup Stand

Eco steps



Step forward screens made using recycled plastic, with staple free packaging, certified by industry standard.

- 50% ↑ recycled materials ²⁾
- Industry certifications (TCO Certified ³⁾, EPEAT ⁴⁾, EnergyStar 8.0)
- Staple free packaging ⁵⁾ (Easier recycling)

¹⁾ Except to S90PC, S80UD, S80D, S80PB.

²⁾ EPEAT Gold certified models only. (S95UF, S80UD, S80D, S80PB, S65UC, S65VC, S60UD, S60D, S43UF, S40GD)

³⁾ See www.tcocertified.com for more information.

⁴⁾ See www.epeat.net for more information.

⁵⁾ All models are staple free. All models which use 'plastic' materials are chemical spray-free.

Samsung Monitors Meet Every Need

Therefore, Samsung monitors offer a wide range of choices to help every professional find their perfect match.

5K



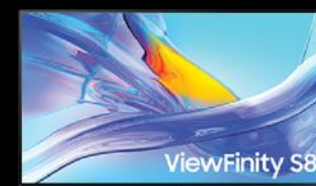
ViewFinity S9
(S90PC 27")

Dual QHD



ViewFinity S9
(S95UF 49")

UHD



ViewFinity S8
(S80UD 27",32",37")



ViewFinity S8
(S80D 27",32",37")



ViewFinity S8
(S80PB 27",32")

Ultra WQHD



ViewFinity S6
(S65UC 34")



ViewFinity S6
(S65VC 34")



ViewFinity S6
(S65TC 34")



ViewFinity S6
(S60UD 24",27",32")



ViewFinity S6
(S60D 24",27",32")



ViewFinity S6
(S61F 27")

QHD

FHD



Essential Monitor S4
(S43UF 24",27")



Essential Monitor S4
(S40GD 22",24",27")

Picks for Your Business

| | |
|--------------------------------------|----|
| Business Overview | 26 |
| Creative & Visual Design | 28 |
| Engineering & Technical Development | 30 |
| Data Analysis & Financial Services | 32 |
| Administration & Business Operations | 34 |



The best set-up for every professional, everywhere.



Creative & Visual Design



Engineering & Technical Development



Data Analysis & Financial Services



Administration & Business Operations

Creative & Visual Design

Creative teams work in highly visual environments like branding, advertising and product design, where high-resolution monitors and design tools are essential. Poor color accuracy or picture quality in these workspaces can distort illustrations, animations and other creative content, cause misaligned designs, create more revision cycles and produce low-quality visuals.



ViewFinity S9 (S90PC 27")

Necessary for

Clarity

- 5K/UHD Resolution
- DCI-P3 98%
- Pantone validated
- Matte Display

Productivity

- Thunderbolt4 (S90PC)
- USB-C Port (S80PB)

Comfort

- Adaptive Picture
- Ergonomic Design (HAS/Tilt/Pivot)
- Eye Saver Mode

Eco Steps

- 13%↑ Recycled Materials (S80PB)
- EPEAT certifications (Silver/Gold)¹⁾

The suggested models



ViewFinity S9
S90PC

5K
27"



ViewFinity S8
S80PB

UHD
27" / 32"

¹⁾ EPEAT certifications may vary by models.

Engineering & Technical Development

High-resolution displays that nail precision, accuracy, and performance are essential for tasks like 3D modeling, simulation, and hardware or software design. When limited to standard screens, these teams face difficulties reviewing technical drawings, comparing code, or tracking simulation results, leading to slower testing and costly rework.



ViewFinity S9 (S95UF, 49")

Necessary for

Clarity

- Wide Screen (21:9/32:9)
- 100Hz+ Refresh Rate
- DQHD/Ultra WQHD Resolution

Productivity

- USB-C port ¹⁾/LAN
- DisplayPort
- KVM Switch

Comfort

- Adaptive Picture
- Eye Saver Mode
- Ergonomic Design (HAS/Tilt/Pivot)

Eco Steps

- 10%+ Recycled Materials
- EPEAT certifications (Silver/Gold) ²⁾

The suggested models



ViewFinity S9
S95UF

DQHD
49"



ViewFinity S6
S65UC

UHD
27" / 32"



ViewFinity S6
S65VC

UWQHD
34"



ViewFinity S6
S65TC

UWQHD
34"

¹⁾ Supported models: S95UF, S65UC, S65VC. ²⁾ EPEAT certifications may vary by models.

Data Analysis & Financial Services

In these fast-paced environments, it's critical to see high-volume, dense visual data at a glance to support efficient decision making in real-time. But frequent toggling between dashboards, spreadsheets and tools can result in lost productivity.



ViewFinity S8 (S80UD 37")

Necessary for

Clarity

- UHD/QHD Resolution
- IPS Panel
- 1.07 billion Color with HDR10

Productivity

- DisplayPort/LAN ¹⁾
- PIP/PBP

Comfort

- Adaptive Picture
- Eye Saver Mode
- Ergonomic Design (HAS/Tilt/Swivel/Pivot ²⁾)

Eco Steps

- 15%↑ Recycled Materials
- EPEAT certifications (Silver/Gold) ³⁾

The suggested models



ViewFinity S8 S80UD

UHD
27" / 32" / 37"



ViewFinity S8 S80D

UHD
27" / 32" / 37"



ViewFinity S6 S60UD

QHD
24" / 27" / 32"

¹⁾ Supported models: S80UD/S60UD. ²⁾ 37" models are not supported. ³⁾ EPEAT certifications may vary by models.

Administration & Business Operations

Administrative and operations teams handle tasks like document processing, scheduling, project management, and casual creative work in compact or shared offices where practical setups matter. Without screens designed for comfort and space efficiency, long hours of reviewing and updating documents can lead to eye strain, fatigue and errors.



ViewFinity S6 (S60D 24")

Necessary for

Clarity

- QHD/FHD Resolution
- IPS Panel
- 100Hz Refresh Rate

Productivity

- USB-C Port/LAN (S43UF)
- DisplayPort

Comfort

- Eye Saver Mode
- Ergonomic Design (HAS/Tilt/Swivel/Pivot)

Eco Steps

- 15%↑ Recycled Materials
- EPEAT certifications (Silver/Gold) ¹⁾

The suggested models



ViewFinity S6 S60D

QHD
24" / 27" / 32"



ViewFinity S6 S61F

QHD
27"



Essential Monitor S4 S43UF

FHD
24" / 27"



Essential Monitor S4 S40GD

FHD
22" / 24" / 27"

¹⁾ EPEAT certifications may vary by models.

Product Highlights

| | |
|----------------------|----|
| Features at a glance | 38 |
| ViewFinity S9 | 40 |
| ViewFinity S8 | 44 |
| ViewFinity S6 | 50 |
| Essential Monitor S4 | 62 |



Samsung Monitors for Professionals at a glance

| | | | | Clarity | | | | Productivity | | | | | | | Wellbeing | | | | | Eco step | | | | | |
|----|------------|------|-------|-----------|----------------|----------------------------|-------------------|--------------|--------------|-----|--------|----------------|--------------|-----|------------|-----|-------|------------------|------------------|----------------|--------------|--------------------|---------|-----------------|------------|
| | | | | IPS panel | DCL-P3 support | HDR 10 & 1B colors | Pantone validated | USB type-C | Thunder bolt | LAN | Camera | Daisy chain | PBP | PIP | KVM switch | HAS | Pivot | Easy Setup Stand | Adaptive Picture | Eye Saver Mode | Flicker Free | Recycled materials | TCO10.0 | Energy star 8.0 | EPEAT Gold |
| S9 | 5K | | S90PC | ● | ● (99%) | ● | ● | | | | | ● (4K SlimFit) | | | | | | | | ● | | | | | |
| | Dual QHD | | S95UF | | | ● (HDR 400) | | ● | | ● | | | ● | | | | | | | ● | ● | ● | ● | ● (PCF) | |
| S8 | UHD | | S80UD | ● | | ● | | ● | | ● | | | | | | | | | | ● | ● | ● | ● | ● (32":37":PCF) | |
| | | | S80D | ● | | ● | | | | | ● | | | | | | | | | ● | ● | ● | ● | ● (37":PCF) | |
| | | | S80PB | ● | ● (98%) | ● (32" HDR600, 27" HDR400) | ● | ● | | ● | | ● | | | | | | | | ● | ● | ● | ● | | |
| S6 | Ultra WQHD | | S65UC | | | ● | | ● | | ● | | | | | | | | | | ● | ● | ● | ● | | |
| | | | S65VC | | | ● | | ● | | ● | | | ● (Built-in) | | | | | | | ● | ● | ● | ● | | |
| | | | S65TC | | | ● | | | ● | | ● | | ● | | | | | | | ● | | ● | | ● (PCF) | |
| | QHD | | S60UD | | | ● | | | ● | | ● | | | | | | | | | ● | ● | ● | ● | ● (24":PCF) | |
| | | S60D | | | ● | | | | | | | | | | | | | | ● | ● | ● | ● | ● | | |
| | | S61F | | | ● | | | | | | | | | | | | | | ● | | | | | | |
| S4 | FHD | | S43UF | ● | | | | ● | | ● | | | | | | | | | | ● | ● | ● | ● | | |
| | | | S40GD | ● | | | | | | | | | | | | | | | | ● | ● | ● | ● | ● (PCF) | |



For more information
Go to Link →

ViewFinity S9

S90PC 27"

Expand your creative realm in 5K

The S90PC fulfills imaginative visions. With its Smart Calibration, users can choose between DCI-P3 or sRGB color space, custom temperature, luminance, and gamma settings in an expedited fashion. 5K resolution paired with 218 PPI creates an even larger canvas that delivers true color representation. Now, artists and creative visionaries have a display that pushes their projects to new peaks. With handpicked characteristics focused on eye comfort and picture quality, this monitor is built for programmers, engineers, designers, photographers, and anyone else who demands accurate images.



Key Features

5K

5K resolution

Provides more pixels than 4K, making a bigger canvas for you, with 218 PPI for incredible detail.



DCI-P3 99%

The 99% DCI-P3 option delivers the color saturation to bring your ideas to vibrant life.



Matte display

Matte Display provides consistent colors without distortion from natural or artificial lights.



Smart calibration

Choose between DCI-P3 or sRGB color space, and customize color temperature, luminance and gamma settings without any extra tools or complex procedures.



Pantone™ Validated

Confirms the authentic reproduction of more than 2,000 Pantone colors and 100 Pantone SkinTone™ shades on screen.



Thunderbolt™ 4 & DP port

Connect to your favorite Windows and Mac devices with DisplayPort and Thunderbolt 4 connectivity.



4K SlimFit camera

4K resolution in the built-in SlimFit camera keeps video conferencing crystal clear.

Specifications

| S90PC | | |
|-----------------------------|----------------------------------|--|
| Display | Screen size | 27" |
| | Flat/Curved | Flat |
| | Resolution | 5,120 x 2,880 |
| | Aspect ratio | 16:9 |
| | Panel type | IPS |
| | Brightness (Typical) | 600 cd/m ² |
| | Contrast ratio (Static) | 1,000:1 (Typ.) |
| | HDR (High Dynamic Range) | 0 |
| | Color support | Max1B |
| | Color coverage | DCI 99% (Typ.) |
| | Viewing angle (H/V) | 178° / 178° |
| | Response time | 5ms (GTG) |
| Frame rate | Max 60Hz | |
| Calibration | Factory tuning | 0 |
| | CMS (Color Management Software) | Smart calibration |
| | Color mode | Entertain / Graphic / Eco / sRGB / BT.709 / DCI-P3 / Custom1 / Custom2 |
| General | PIP (Picture-In-Picture) | - |
| | PBP (Picture-By-Picture) | - |
| | Daisy Chain | - |
| | KVM Switch | - |
| | Auto Source Switch | 0 |
| | Windows certification | Windows 10 |
| | Adaptive Picture | 0 |
| | Eye Saver Mode | 0 |
| Flicker Free | 0 | |
| Interface | DisplayPort | - |
| | DisplayPort Out | - |
| | Mini-DisplayPort | 1 EA (2.2) |
| | HDMI | - |
| | USB ports | 3.0 x 3 EA |
| | USB type-C | - |
| | Thunderbolt | 1 EA (90W) |
| | Version of Thunderbolt | 4 |
| | Ethernet (LAN) | - |
| | WiFi | WiFi5 |
| | Bluetooth | BT4.2 |
| | Speaker | 0 (5W x 2) |
| Built-in camera | - | |
| Windows Hello certification | - | |
| Design | Stand type | HAS Pivot |
| | HAS (Height-Adjustable Stand) | 120mm (±5.0mm) |
| | Tilt | -2.0° (±2.0°) ~ 15.0° (±2.0°) |
| | Swivel | - |
| | Pivot | -92.0° (±2.0°) ~ 92.0° (±2.0°) |
| | Wall mount | 100 x 100 |
| | Set dimension with stand (WxHxD) | 611.4 x 530.7 x 135.5 mm |
| Set weight with stand | 7.4 kg | |
| Eco | Energy Star | - |
| | TCO | - |
| | EPEAT | - |
| | Carbon Footprint | - |
| Power | Recycled Plastic | 3% ↑ |
| | Power supply | AC100-240V |
| | Type | Internal power |



For more information
Go to Link →

ViewFinity S9

S95UF 49"

Double your discoveries

The S95UF, a dual QHD curved monitor, has the 32:9 super ultrawide screen that maximizes your screen real estate and removes the hassle of a dual monitor setup. On just one screen, take advantage of seamless multitasking capabilities. The curve enables a more comfortable experience by limiting eye strain and keeping content within sight lines, resulting in less fatigue and more efficient work. Enhanced with a built-in KVM switch, users can also control two sources connected to the monitor with just one keyboard and mouse.



* See www.tco-certified.com for more information.
* See www.energystar.gov for more information.
* EPEAT registration status varies by country. Please check the registration status for your country at www.epeat.net.

Key Features



Dual QHD

Ensures enhanced depth in every detail, delivering incredibly realistic images.



Super ultra-wide screen

The 32:9 super ultra-wide display maximizes your screen real estate and removes the hassle of a dual monitor setup for seamless multitasking on just one screen.



DisplayHDR 400

HDR support brings a true high dynamic range of luminous blacks and whites to the screen.



PBP / PIP

With PBP, view input from two simultaneous sources at native resolution. Use PIP to resize a second source to up to 25% of the screen.



Built-in KVM Switch

A built-in KVM switch allows the user to control two sources connected to the monitor, with just one keyboard and mouse.



USB type-C

Features a USB type-C port with 90W charging to power your laptop and transmit data with just one cable.



120Hz Refresh Rate

120Hz refresh rate delivers every frame smoothly for fluid scenes with reduced lag and less ghosting effects.

Specifications

| | | S95UF |
|-----------------------------|----------------------------------|--|
| Display | Screen size | 49" |
| | Flat/Curved | Curved (1,000R) |
| | Resolution | 5,120 x 1,440 |
| | Aspect ratio | 32:9 |
| | Panel type | VA |
| | Brightness (Typical) | 350 cd/m ² |
| | Contrast ratio (Static) | 3,000:1 (Typ.) |
| | HDR (High Dynamic Range) | VESA DisplayHDR 400 |
| | Color support | Max1.07B |
| | Color coverage | sRGB 115% (Typ.) |
| | Viewing angle (H/V) | 178° / 178° |
| | Response time | 5ms (GTG) |
| Frame rate | Max120Hz | |
| Calibration | Factory tuning | 0 |
| | CMS (Color Management Software) | - |
| | Color mode | Entertain / Graphic / Eco / Game Standard / RPG / RTS / FPS / Sports / Original / Custom |
| General | PIP (Picture-In-Picture) | 0 |
| | PBP (Picture-By-Picture) | 0 |
| | Daisy Chain | - |
| | KVM Switch | 0 |
| | Auto Source Switch | 0 |
| | Windows certification | Windows 11 |
| | Adaptive Picture | 0 |
| | Eye Saver Mode | 0 |
| | Flicker Free | 0 |
| | Interface | DisplayPort |
| DisplayPort Out | | - |
| Mini-DisplayPort | | - |
| HDMI | | 2 EA (2.0) |
| USB ports | | 3.0 x 3 EA |
| USB type-C | | 1 EA (90W) |
| Thunderbolt | | - |
| Version of Thunderbolt | | - |
| Ethernet (LAN) | | 1 EA |
| WiFi | | - |
| Bluetooth | | - |
| Speaker | | 0 (5W x 2) |
| Built-in camera | | - |
| Windows Hello certification | - | |
| Design | Stand type | HAS |
| | HAS (Height-Adjustable Stand) | 120mm (±5.0mm) |
| | Tilt | -2.0° (±2.0°) ~ 11.0° (±2.0°) |
| | Swivel | -15.0° (±3.0°) ~ 15.0° (±3.0°) |
| | Pivot | - |
| | Wall mount | 100 x 100 |
| | Set dimension with stand (WxHxD) | 1147.6 x 568.4 x 420.5 mm |
| Set weight with stand | 15.6 kg | |
| Eco | Energy Star | Yes |
| | TCO | Yes |
| | EPEAT | Yes |
| | Carbon Footprint | Yes |
| | Recycled Plastic | 50% ↑ |
| Power | Power supply | AC100-240V(50Hz/60Hz) |
| | Type | Internal power |



For more information
Go to Link →

ViewFinity S8

S80UD 27", 32", 37"

Power your performance with 4K resolution

Presenting the monitor for the pickiest professionals. The S80UD is ideal for programmers, engineers, designers, photographers, and anyone who demands critically accurate images. With 4K/UHD 3840 x 2160 resolution, you'll have four times the resolution of a standard 1080p monitor. Content is legible even at smaller sizes, so you can see more lines of code, more spreadsheet columns, more web content, and more documents at once. Additionally, a single USB-C cable manages the display input, power, and data — ensuring a clean and straightforward setup.



Key Features

UHD UHD resolution

With 4x the pixels of Full HD, every detail is viewed in enhanced depth, while more screen real estate provides space to view multiple tools, applications and programs during the day.

IPS IPS panel

Every user can expect a great viewing experience from any angle, in vivid and vibrant color without washing or fade.

HDR 1 billion colors with HDR10

With a wide range of colors, near limitless hues and HDR10, every piece of content becomes a joy to look at and can be experienced exactly as the creator intended.

USB type-C

Features a USB type-C port with 90W charging to power your laptop and transmit data with just one cable.

LAN port

Additional LAN ports allow you to simply connect to Ethernet through your monitor, even if your laptop does not have a LAN port.

Easy Setup Stand

Effortlessly create an ideal workspace without any tools or screws. Simply push a button and enjoy flexible convenience.

Ergonomic Workspace Display (37")

Samsung's first 37-inch UHD monitor offers an expansive, eye-comfortable workspace for enhanced productivity and reduced visual fatigue.

Specifications

| S80UD | | | | |
|-------------|----------------------------------|--|--|--|
| | | 27" | 32" | 37" |
| Display | Screen size | 27" | 32" | 37" |
| | Flat/Curved | Flat | Flat | Flat |
| | Resolution | 3,840 x 2,160 | 3,840 x 2,160 | 3,840 x 2,160 |
| | Aspect ratio | 16:9 | 16:9 | 16:9 |
| | Panel type | IPS | IPS/VA | VA |
| | Brightness (Typical) | 350 cd/m ² | 350 cd/m ² | 350 cd/m ² |
| | Contrast ratio (Static) | 1,000:1 (Typ.) | 1,000:1 (Typ.) | 3,000:1 (Typ.) |
| | HDR (High Dynamic Range) | HDR 10 | HDR 10 | HDR 10 |
| | Color support | Max 1.07B | Max 1.07B | Max 1.07B |
| | Color coverage | sRGB 99% (Typ.) | sRGB 99% (Typ.) | sRGB 100% (Typ.) |
| | Viewing angle (H/V) | 178° / 178° | 178° / 178° | 178° / 178° |
| | Response time | 5ms (GTG) | 5ms (GTG) | 5ms (GTG) |
| Frame rate | Max 60Hz | Max 60Hz | Max 60Hz | |
| Calibration | Factory tuning | 0 | 0 | 0 |
| | CMS (Color Management Software) | - | - | - |
| General | Color mode | Entertain / Graphic / Eco / Game Standard / RPG / RTS / FPS / Sports / Original / Custom | Entertain / Graphic / Eco / Game Standard / RPG / RTS / FPS / Sports / Original / Custom | Entertain / Graphic / Eco / Game Standard / RPG / RTS / FPS / Sports / Original / Custom |
| | PIP (Picture-In-Picture) | 0 | 0 | 0 |
| | PBP (Picture-By-Picture) | 0 | 0 | 0 |
| | Daisy Chain | - | - | - |
| | KVM Switch | 0 | 0 | 0 |
| | Auto Source Switch | 0 | 0 | 0 |
| | Windows certification | Windows 11 | Windows 11 | Windows 11 |
| | Adaptive Picture | 0 | 0 | 0 |
| | Eye Saver Mode | 0 | 0 | 0 |
| | Flicker Free | 0 | 0 | 0 |
| Interface | DisplayPort | 1 EA (1.2) | 1 EA (1.2) | 1 EA (1.2) |
| | DisplayPort Out | - | - | - |
| | Mini-DisplayPort | - | - | - |
| | HDMI | 1 EA (2.0) | 1 EA (2.0) | 1 EA (2.0) |
| | USB ports | 3.0 x 3 EA | 3.0 x 3 EA | 3.0 x 3 EA |
| | USB type-C | 1 EA (90W) | 1 EA (90W) | 1 EA (90W) |
| | Thunderbolt | - | - | - |
| | Version of Thunderbolt | - | - | - |
| | Ethernet (LAN) | 1 EA | 1 EA | 1 EA |
| | WiFi | - | - | - |
| | Bluetooth | - | - | - |
| | Speaker | - | - / 0 (5W x 2) | - |
| | Built-in camera | - | - | - |
| | Windows Hello certification | - | - | - |
| Design | Stand type | HAS PIVOT | HAS PIVOT | HAS |
| | HAS (Height-Adjustable Stand) | 120mm(±5.0mm) | 120mm(±5.0mm) | 120mm (±5.0mm) |
| | Tilt | -2.0°(±2.0°)~25.0°(±2.0°) | -2.0°(±2.0°)~25.0°(±2.0°) | -5.0°(±2.0°) ~ 20.0°(±2.0°) |
| | Swivel | -30.0°(±3.0°)~30.0°(±3.0°) | -30.0°(±3.0°)~30.0°(±3.0°) | -30.0°(±3.0°) ~ 30.0°(±3.0°) |
| | Pivot | -92.0°(±2.0°)~92.0°(±2.0°) | -92.0°(±2.0°)~92.0°(±2.0°) | - |
| | Wall mount | 100 x 100 | 100 x 100 | 100 x 100 |
| | Set dimension with stand (WxHxD) | 612.9 x 556.6 x 220 | 713.9 x 585 x 220 | 823.9 x 648.0 x 250.0 |
| | Set weight with stand | 6.1 kg | 7.4kg | 8.9kg |
| Eco | Energy Star | Yes | Yes | Yes |
| | TCO | Yes | Yes | Yes |
| | EPEAT | Yes | Yes | Yes |
| | Carbon Footprint | Yes | Yes | Yes |
| | Recycled Plastic | 16% ↑ | 15% ↑ | 85% ↑ |
| Power | Power supply | AC100~240V | AC100~240V | AC100~240V |
| | Type | Internal power | Internal power | Internal power |



For more information
Go to Link

ViewFinity S8

S80D 27", 32", 37"

Easy on the eyes with clearer quality

With four times the resolution of 1080p monitors, the S80D delivers unmatched image quality. Illustrations and videos are easier to work with, photos can be displayed with deeper details, and smaller text will be easier to read. The monitor is designed for maximum eye comfort through Eye Saver Mode and Flicker Free technology. Experience less strain during long working or viewing sessions with lower blue light levels and no flickering images.



Key Features

UHD UHD resolution

With 4x the pixels of Full HD, every detail is viewed in enhanced depth, while more screen real estate provides space to view multiple tools, applications and programs during the day.

IPS IPS panel

Every user can expect a great viewing experience from any angle, in vivid and vibrant color without washing or fade.

HDR 1 billion colors with HDR10

With a wide range of colors, near limitless hues and HDR10, every piece of content becomes a joy to look at and can be experienced exactly as the creator intended.

Easy Setup Stand

Effortlessly create an ideal workspace without any tools or screws. Simply push a button and enjoy flexible convenience.

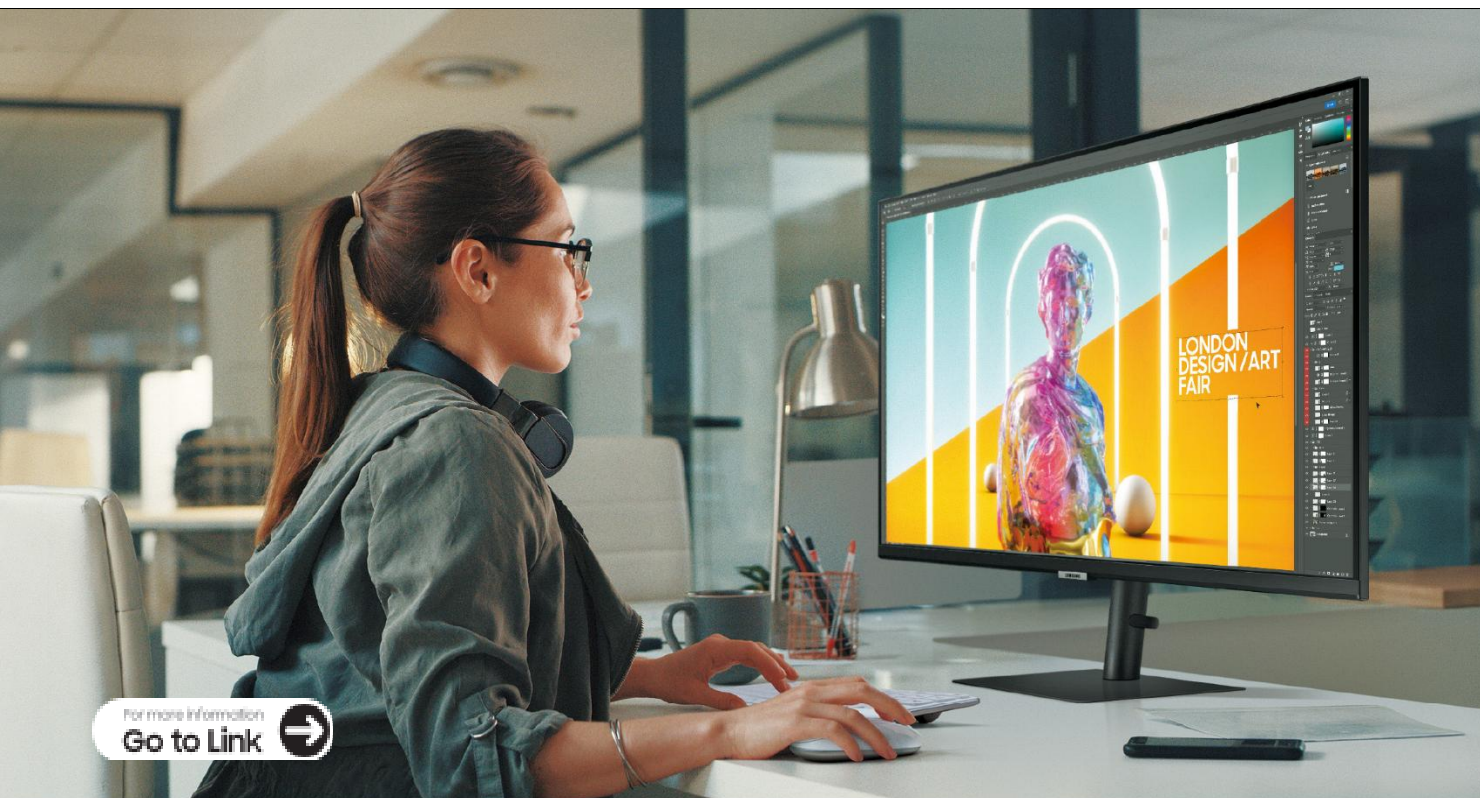
Ergonomic Workspace Display (37")

Samsung's first 37-inch UHD monitor offers an expansive, eye-comfortable workspace for enhanced productivity and reduced visual fatigue.

Specifications

| S80D | | | | | |
|-----------------------------|----------------------------------|--|--|--|------------|
| | | 27" | 32" | 37" | |
| Display | Screen size | 27" | 32" | 37" | |
| | Flat/Curved | Flat | Flat | Flat | |
| | Resolution | 3,840 x 2,160 | 3,840 x 2,160 | 3,840 x 2,160 | |
| | Aspect ratio | 16:9 | 16:9 | 16:9 | |
| | Panel type | IPS | VA | VA | |
| | Brightness (Typical) | 350 cd/m ² | 350 cd/m ² | 350 cd/m ² | |
| | Contrast ratio (Static) | 1,000:1 (Typ.) | 3,000:1 (Typ.) | 3,000:1 (Typ.) | |
| | HDR (High Dynamic Range) | HDR 10 | HDR 10 | HDR 10 | |
| | Color support | Max 1.07B | Max 1.07B | Max 1.07B | |
| | Color coverage | sRGB 99% (Typ.) | sRGB 99% (Typ.) | sRGB 100% (Typ.) | |
| | Viewing angle (H/V) | 178° / 178° | 178° / 178° | 178° / 178° | |
| | Response time | 5ms (GTG) | 5ms (GTG) | 5ms (GTG) | |
| Frame rate | Max 60Hz | Max 60Hz | Max 60Hz | | |
| Calibration | Factory tuning | 0 | 0 | 0 | |
| | CMS (Color Management Software) | - | - | - | |
| General | Color mode | Entertain / Graphic / Eco / Game Standard / RPG / RTS / FPS / Sports / Original / Custom | Entertain / Graphic / Eco / Game Standard / RPG / RTS / FPS / Sports / Original / Custom | Entertain / Graphic / Eco / Game Standard / RPG / RTS / FPS / Sports / Original / Custom | |
| | PIP (Picture-In-Picture) | 0 | 0 | 0 | |
| | PBP (Picture-By-Picture) | 0 | 0 | 0 | |
| | Daisy Chain | - | - | - | |
| | KVM Switch | - | - | - | |
| | Auto Source Switch | 0 | 0 | 0 | |
| | Windows certification | Windows 11 | Windows 11 | Windows 11 | |
| | Adaptive Picture | 0 | 0 | 0 | |
| | Eye Saver Mode | 0 | 0 | 0 | |
| | Flicker Free | 0 | 0 | 0 | |
| | Interface | DisplayPort | 1 EA (1.2) | 1 EA (1.2) | 1 EA (1.2) |
| | | DisplayPort Out | - | - | - |
| Mini-DisplayPort | | - | - | - | |
| HDMI | | 1 EA (2.0) | 1 EA (2.0) | 1 EA (2.0) | |
| USB ports | | 3.0 x 3 EA | 3.0 x 3 EA | 3.0 x 3 EA | |
| USB type-C | | - | - | - | |
| Thunderbolt | | - | - | - | |
| Version of Thunderbolt | | - | - | - | |
| Ethernet (LAN) | | - | - | - | |
| WiFi | | - | - | - | |
| Bluetooth | | - | - | - | |
| Speaker | | - | - | - | |
| Built-in camera | - | - | - | | |
| Windows Hello certification | - | - | - | | |
| Design | Stand type | HAS PIVOT | HAS PIVOT | HAS | |
| | HAS (Height-Adjustable Stand) | 120mm(±5.0mm) | 120mm(±5.0mm) | 120mm (±5.0mm) | |
| | Tilt | -2.0°(±2.0°)~25.0°(±2.0°) | -2.0°(±2.0°)~25.0°(±2.0°) | -5.0°(±2.0°) ~ 20.0°(±2.0°) | |
| | Swivel | -30.0°(±3.0°)~30.0°(±3.0°) | -30.0°(±3.0°)~30.0°(±3.0°) | -30.0°(±3.0°) ~ 30.0°(±3.0°) | |
| | Pivot | -92.0°(±2.0°)~92.0°(±2.0°) | -92.0°(±2.0°)~92.0°(±2.0°) | - | |
| | Wall mount | 100 x 100 | 100 x 100 | 100 x 100 | |
| | Set dimension with stand (WxHxD) | 612.9 x 556.6 x 220 | 713.9 x 585 x 220 | 823.8 x 648.0 x 250 | |
| Eco | Set weight with stand | 6.1 kg | 6.9 kg | 8.8kg | |
| | Energy Star | Yes | Yes | Yes | |
| | TCO | Yes | Yes | Yes | |
| | EPEAT | Yes | Yes | Yes | |
| | Carbon Footprint | Yes | Yes | Yes | |
| Power | Recycled Plastic | 16% ↑ | 15% ↑ | 86% ↑ | |
| | Power supply | AC100~240V | AC100~240V | AC100~240V | |
| | Type | Internal power | Internal power | Internal power | |





ViewFinity S8

S80PB 27", 32"

Deepen your creative mindset

Uncover every detail with maximum clarity. With 4 times as many pixels as Full HD, an anti-glare matte display, and an extended color range supporting 98% of DCI-P3, every detail is enhanced on a richer and more vibrant color spectrum. With PBP and PIP capabilities, this monitor improves productivity by allowing multiple screens to be split into different dimensions side by side.



Key Features

UHD UHD resolution

With 4x the pixels of Full HD, every detail is viewed in enhanced depth, while more screen real estate provides space to view multiple tools, applications and programs during the day.

DCI-P3 98%

Features an extended color range supporting up to 98% of DCI-P3, creating richer and more vibrant colors in every project.

DisplayHDR 600 (32") / 400 (27")

HDR support brings a true high dynamic range of luminous blacks and whites to the screen.

Matte display

Matte Display provides consistent colors without distortion from natural or artificial lights.

Pantone Validated™

Confirms the authentic reproduction of more than 2,000 Pantone colors and 100 Pantone SkinTone™ shades on screen.

PBP / PIP

With PBP, view input from two simultaneous sources at native resolution. Use PIP to resize a second source to up to 25% of the screen.



Specifications

| S80PB | | | |
|-----------------------------|----------------------------------|--|--|
| | | 27" | 32" |
| Display | Screen size | 27" | 32" |
| | Flat/Curved | Flat | Flat |
| | Resolution | 3,840 x 2,160 | 3,840 x 2,160 |
| | Aspect ratio | 16:9 | 16:9 |
| | Panel type | IPS | IPS |
| | Brightness (Typical) | 350 cd/m ² | 350 cd/m ² |
| | Contrast ratio (Static) | 1,000:1 (Typ.) | 1,000:1 (Typ.) |
| | HDR (High Dynamic Range) | VESA DisplayHDR 400 | VESA DisplayHDR 600 |
| | Color support | Max 1.07B | Max 1.07B |
| | Color coverage | DCI 98% (Typ.) | DCI 98% (Typ.) |
| | Viewing angle (H/V) | 178° / 178° | 178° / 178° |
| | Response time | 5ms | 5ms |
| Frame rate | Max 60Hz | Max 60Hz | |
| Calibration | Factory tuning | 0 | 0 |
| | CMS (Color Management Software) | - | - |
| | Color mode | Custom / High Bright / sRGB / BT.709 / DCI-P3 / DICOM Simulation / Cinema / Dynamic Contrast | Custom / High Bright / sRGB / BT.709 / DCI-P3 / DICOM Simulation / Cinema / Dynamic Contrast |
| General | PIP (Picture-In-Picture) | 0 | 0 |
| | PBP (Picture-By-Picture) | 0 | 0 |
| | Daisy Chain | - | - |
| | KVM Switch | - | - |
| | Auto Source Switch | 0 | 0 |
| | Windows certification | Windows 10 | Windows 10 |
| | Adaptive Picture | 0 | 0 |
| | Eye Saver Mode | 0 | 0 |
| Flicker Free | 0 | 0 | |
| Interface | DisplayPort | 1 EA (1.4) | 1 EA (1.4) |
| | DisplayPort Out | - | - |
| | Mini-DisplayPort | - | - |
| | HDMI | 1 EA (2.0) | 1 EA (2.0) |
| | USB ports | 3.0 x 3 EA | 3.0 x 3 EA |
| | USB type-C | 1 EA (90W) | 1 EA (90W) |
| | Thunderbolt | - | - |
| | Version of Thunderbolt | - | - |
| | Ethernet (LAN) | 1 EA | 1 EA |
| | WiFi | - | - |
| | Bluetooth | - | - |
| | Speaker | - | - |
| | Built-in camera | - | - |
| Windows Hello certification | - | - | |
| Design | Stand type | HAS Pivot | HAS Pivot |
| | HAS (Height-Adjustable Stand) | 120mm (±5.0mm) | 120mm (±5.0mm) |
| | Tilt | -2.0° (±3.0°) ~ 25.0° (±3.0°) | -2.0° (±3.0°) ~ 25.0° (±3.0°) |
| | Swivel | -30.0° (±3.0°) ~ 30.0° (±3.0°) | -30.0° (±3.0°) ~ 30.0° (±3.0°) |
| | Pivot | -2.0° (±2.0°) ~ 92.0° (±2.0°) | -2.0° (±2.0°) ~ 92.0° (±2.0°) |
| | Wall mount | 100 x 100 | 100 x 100 |
| | Set dimension with stand (WxHxD) | 615.5 x 551.9 x 196.4 mm | 716.1 x 580.4 x 211.4 mm |
| Set weight with stand | 6.7 kg | 7.5 kg | |
| Eco | Energy Star | Yes | Yes |
| | TCO | Yes | Yes |
| | EPEAT | Yes | Yes |
| | Carbon Footprint | - | - |
| Power | Recycled Plastic | 13% ↑ | 13% ↑ |
| | Power supply | AC100~240V | AC100~240V |
| | Type | Internal power | Internal power |



For more information
Go to Link →

ViewFinity S6

S65UC 34"

Ultra-wide immersion

Become captivated in your games, projects, or streaming. With the S65UC, the 100Hz refresh rate and AMD FreeSync™ partner together to create a smooth and stutter-free experience, while the 34" 1000R curved display promotes a 21:9 aspect ratio that matches a natural field of vision. Added together, users can witness everything and perform their best, without missing a single detail. Additionally, an adjustable screen height that enables swiveling and tilting helps create a more comfortable experience. Enjoy the meeting point of comfort and immersion.



* See www.tco-certified.com for more information.
* See www.energystar.gov for more information.
* EPEAT registration status varies by country. Please check the registration status for your country at www.epeat.net.

Key Features

UHD Ultra WQHD with 1000R curvature

A 34" 1000R curved display surrounds you with a 21:9 aspect ratio. You can reach new levels of productivity with less eye strain.

HDR 1 billion colors with HDR10

With a wide range of colors, near limitless hues and HDR10, every piece of content becomes a joy to look at and can be experienced exactly as the creator intended.

Built-in speaker

Free up desk space by minimizing the connections, while ensuring you can listen to any content with ease.

Built-in KVM Switch

A built-in KVM switch allows the user to control two sources connected to the monitor, with just one keyboard and mouse.

USB type-C

Features a USB type-C port with 90W charging to power your laptop and transmit data with just one cable.

LAN port

Features a LAN Port which allows a laptop that has no LAN port to simply connect to the monitor for Ethernet use.



Specifications

| S65UC | | |
|----------------------------------|---------------------------------|--|
| Display | Screen size | 34" |
| | Flat/Curved | Curved (1,000R) |
| | Resolution | 3,440 x 1,440 |
| | Aspect ratio | 21:9 |
| | Panel type | VA |
| | Brightness (Typical) | 350 cd/m ² |
| | Contrast ratio (Static) | 3,000:1 (Typ.) |
| | HDR (High Dynamic Range) | HDR 10 |
| | Color support | Max1.07B |
| | Color coverage | sRGB 115% (Typ.) |
| | Viewing angle (H/V) | 178° / 178° |
| | Response time | 5ms |
| Frame rate | Max100Hz | |
| Calibration | Factory tuning | 0 |
| | CMS (Color Management Software) | - |
| | Color mode | Entertain / Graphic / Eco / Game Standard / RPG / RTS / FPS / Sports / Original / Custom |
| General | PIP (Picture-In-Picture) | 0 |
| | PBP (Picture-By-Picture) | 0 |
| | Daisy Chain | - |
| | KVM Switch | 0 |
| | Auto Source Switch | 0 |
| | Windows certification | Windows 10 |
| | Adaptive Picture | 0 |
| | Eye Saver Mode | 0 |
| Flicker Free | 0 | |
| Interface | DisplayPort | 1EA (1.2) |
| | DisplayPort Out | - |
| | Mini-DisplayPort | - |
| | HDMI | 1 EA (2.0) |
| | USB ports | A 3.0 x 3 EA(DN), B1 EA(UP) |
| | USB type-C | 1 EA (90W) |
| | Thunderbolt | - |
| | Version of Thunderbolt | - |
| | Ethernet (LAN) | 1 EA |
| | WiFi | - |
| | Bluetooth | - |
| | Speaker | 0 (5W) |
| | Built-in camera | - |
| | Windows Hello certification | - |
| | Design | Stand type |
| HAS (Height-Adjustable Stand) | | 120mm (+5.0mm) |
| Tilt | | -2.0° (+3.0°) ~ 20.0°(+3.0°) |
| Swivel | | -30.0° (+3.0°) ~ 30.0°(+3.0°) |
| Pivot | | - |
| Wall mount | | 100 x 100 |
| Set dimension with stand (WxHxD) | | 806.6 x 561.5 x 241.0 mm |
| Set weight with stand | 8.0 kg | |
| Eco | Energy Star | Yes |
| | TCO | Yes |
| | EPEAT | Yes |
| | Carbon Footprint | - |
| Power | Recycled Plastic | 10% ↑ |
| | Power supply | AC100-240V |
| | Type | Internal power |



ViewFinity S6

S65VC 34"

A secure camera and speakers, all in one

The S65VC increases connectivity through a built-in camera. Join video calls directly through the monitor with no additional devices needed. When not in use, the camera can be pushed down into the monitor to keep the display's sleek profile. Windows Hello uses the camera and biometrics to securely sign you into any Windows 11 device, app, or website without a password. With built-in speakers, you can free up desk space by minimizing the connections needed for a more efficient working environment, while ensuring you can listen to any content with ease.



Key Features

ULTRA WQHD **Ultra WQHD with 1000R curvature**
A 34" 1000R curved display surrounds you with a 21:9 aspect ratio. You can reach new levels of productivity with less eye strain.

HDR10 **1 billion colors with HDR10**
With a wide range of colors, near limitless hues and HDR10, every piece of content becomes a joy to look at and can be experienced exactly as the creator intended.

Windows Hello **A built-in camera and Windows Hello**
Stay connected through video calls and streaming without any extra devices. Windows Hello uses the camera and biometrics to securely sign you into any Windows 11 device, app or website without a password.

Speaker **Built-in speaker**
Free up desk space by minimizing the connections, while ensuring you can listen to any content with ease.

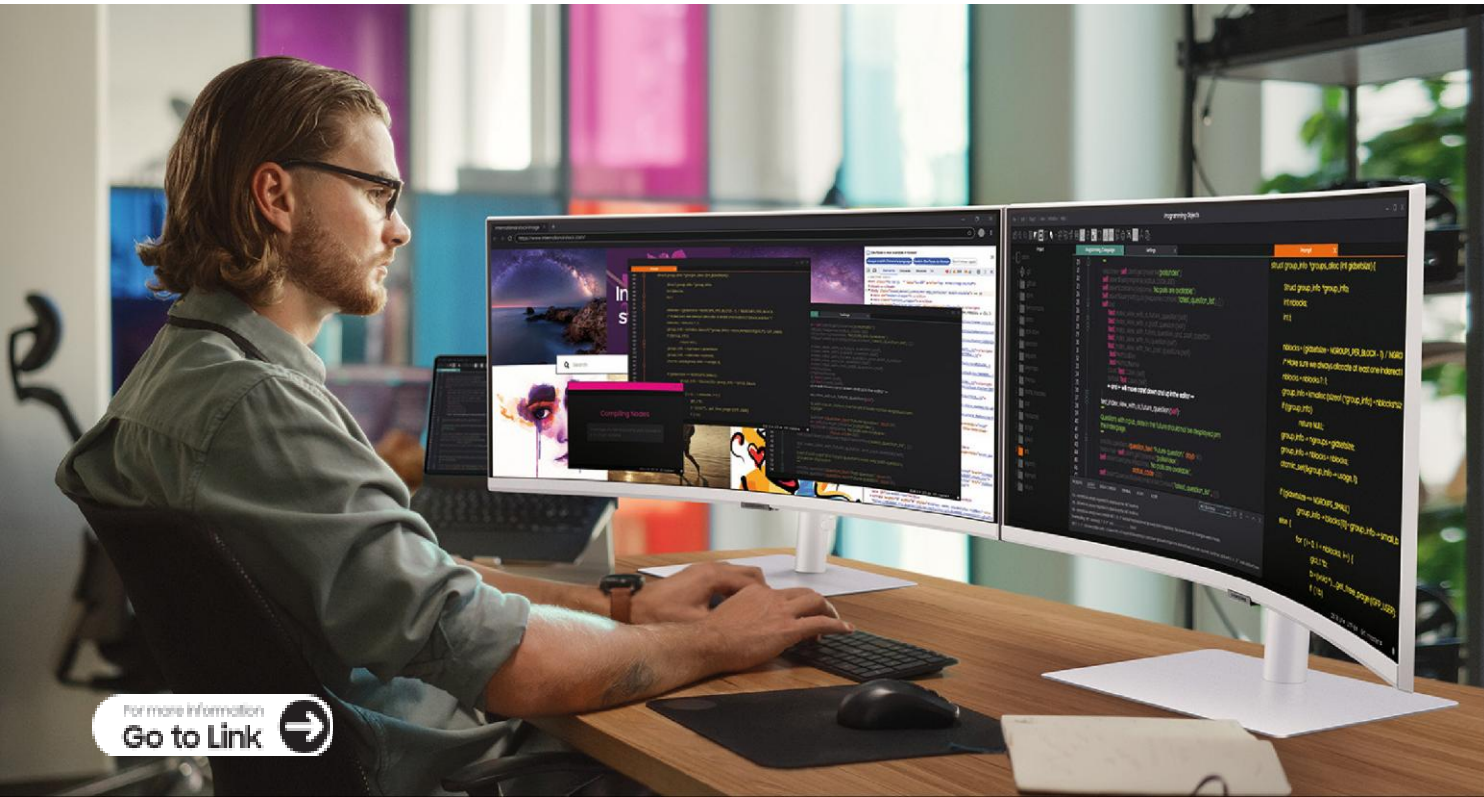
KVM Switch **Built-in KVM Switch**
A built-in KVM switch allows the user to control two sources connected to the monitor, with just one keyboard and mouse.

USB type-C **USB type-C**
Features a USB type-C port with 90W charging to power your laptop and transmit data with just one cable.

LAN port **LAN port**
Features a LAN Port which allows a laptop that has no LAN port to simply connect to the monitor for Ethernet use.

Specifications

| S65VC | | |
|-----------------------------|----------------------------------|--|
| Display | Screen size | 34" |
| | Flat/Curved | Curved (1,000R) |
| | Resolution | 3,440 x 1,440 |
| | Aspect ratio | 21:9 |
| | Panel type | VA |
| | Brightness (Typical) | 350 cd/m ² |
| | Contrast ratio (Static) | 3,000:1 (Typ.) |
| | HDR (High Dynamic Range) | HDR 10 |
| | Color support | Max1.07B |
| | Color coverage | sRGB 115% (Typ.) |
| | Viewing angle (H/V) | 178° / 178° |
| | Response time | 5ms |
| Frame rate | Max100Hz | |
| Calibration | Factory tuning | 0 |
| | CMS (Color Management Software) | - |
| | Color mode | Entertain / Graphic / Eco / Game Standard / RPG / RTS / FPS / Sports / Original / Custom |
| General | PIP (Picture-In-Picture) | 0 |
| | PBP (Picture-By-Picture) | 0 |
| | Daisy Chain | - |
| | KVM Switch | 0 |
| | Auto Source Switch | 0 |
| | Windows certification | Windows 10 |
| | Adaptive Picture | 0 |
| | Eye Saver Mode | 0 |
| | Flicker Free | 0 |
| | Interface | DisplayPort |
| DisplayPort Out | | - |
| Mini-DisplayPort | | - |
| HDMI | | 1 EA (2.0) |
| USB ports | | A 3.0 x 2 EA(DN), B1 EA(UP) |
| USB type-C | | 1 EA (90W) |
| Thunderbolt | | - |
| Version of Thunderbolt | | - |
| Ethernet (LAN) | | 1 EA |
| WiFi | | - |
| Bluetooth | | - |
| Speaker | | 0 (5W) |
| Built-in camera | | 5MP, IR camera |
| Windows Hello certification | 0 | |
| Design | Stand type | HAS |
| | HAS (Height-Adjustable Stand) | 120mm (+5.0mm) |
| | Tilt | -2.0° (+3.0°) ~ 20.0°(+3.0°) |
| | Swivel | -30.0° (+3.0°) ~ 30.0°(+3.0°) |
| | Pivot | - |
| | Wall mount | 100 x 100 |
| | Set dimension with stand (WxHxD) | 806.6 x 561.5 x 241.0 mm |
| Set weight with stand | 8.1 kg | |
| Eco | Energy Star | Yes |
| | TCO | Yes |
| | EPEAT | Yes |
| | Carbon Footprint | - |
| | Recycled Plastic | 10% ↑ |
| Power | Power supply | AC100-240V |
| | Type | Internal power |



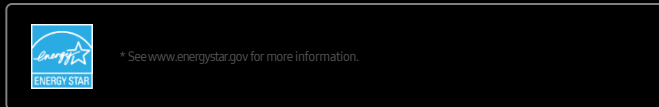
For more information
Go to Link →

ViewFinity S6

S65TC 34"

Connect more for higher productivity

Ultra-wide QHD resolution and a 1000R curve come together on the S65TC to maximize productivity and make the most out of the screen's 34", 21:9 real estate. Ditch the clutter with easy-to-use ports, including Thunderbolt 4, which supports 90W charging and data transmitting at the same time. 1 billion colors are represented true to life with HDR10, bringing darker darks and brighter brights to the screen. Plus, more devices can be used without hassle through the built-in KVM switch, which keeps control for 2 sources on one mouse and keyboard. The S65TC enables your best performance across work and play with a 100Hz refresh rate and AMD FreeSync™.



Key Features

ULTRA WQHD **Ultra WQHD with 1000R curvature**
A 34" 1000R curved display surrounds you with a 21:9 aspect ratio. You can reach new levels of productivity with less eye strain.

HDR **1 billion colors with HDR10**
With a wide range of colors and HDR10, every piece of content becomes a joy to look at and can be experienced exactly as the creator intended.

Built-in speaker
Free up desk space by minimizing the connections, while ensuring you can listen to any content with ease.

Built-in KVM Switch
A built-in KVM switch allows the user to control two sources connected to the monitor, with just one keyboard and mouse.

Thunderbolt™ 4 port
Power your laptop and transmit data with just one Thunderbolt™ 4 cable with 90W charging for less connection mess in your workspace.
(* Thunderbolt™ 4 cable is sold separately.)

Daisy Chain
Connect to compatible Macs and PCs and work on a bigger screen, enjoying a simpler dual Ultra WQHD setup.

LAN port
Additional LAN ports allow you to simply connect to Ethernet through your monitor, even if your laptop does not have a LAN port.

Specifications

| S65TC | | |
|-----------------------------|----------------------------------|--|
| Display | Screen size | 34" |
| | Flat/Curved | Curved (1,000R) |
| | Resolution | 3,440 x 1,440 |
| | Aspect ratio | 21:9 |
| | Panel type | VA |
| | Brightness (Typical) | 350 cd/m ² |
| | Contrast ratio (Static) | 3,000:1 (Typ.) |
| | HDR (High Dynamic Range) | HDR10 |
| | Color support | Max1.07B |
| | Color coverage | sRGB 115% (Typ.) |
| | Viewing angle (H/V) | 178° / 178° |
| | Response time | 5ms |
| Frame rate | Max100Hz | |
| Calibration | Factory tuning | - |
| | CMS (Color Management Software) | - |
| | Color mode | Entertain / Graphic / Eco / Game Standard / RPG / RTS / FPS / Sports / Original / Custom |
| General | PIP (Picture-In-Picture) | 0 |
| | PBP (Picture-By-Picture) | 0 |
| | Daisy Chain | 0 |
| | KVM Switch | 0 |
| | Auto Source Switch | - |
| | Windows certification | Windows 11 |
| | Adaptive Picture | 0 |
| | Eye Saver Mode | 0 |
| | Flicker Free | 0 |
| | Interface | DisplayPort |
| DisplayPort Out | | - |
| Mini-DisplayPort | | - |
| HDMI | | 1 EA (2.2) |
| USB ports | | A 3.0 x 3 EA(DN), B1 EA(UP) |
| USB type-C | | - |
| Thunderbolt | | 2 EA |
| Version of Thunderbolt | | 4.0 |
| Ethernet (LAN) | | 1 EA |
| WiFi | | - |
| Bluetooth | | - |
| Speaker | | 0 (5W) |
| Built-in camera | | - |
| Windows Hello certification | | - |
| Design | Stand type | HAS |
| | HAS (Height-Adjustable Stand) | 120mm (±5.0mm) |
| | Tilt | -2.0° (±3.0°) ~ 20.0° (±3.0°) |
| | Swivel | -30.0° (±3.0°) ~ 30.0° (±3.0°) |
| | Pivot | - |
| | Wall mount | 100 x 100 |
| | Set dimension with stand (WxHxD) | 806.6 x 561.5 x 241.0 mm |
| | Set weight with stand | 8.1 kg |
| Eco | Energy Star | Yes |
| | TCO | - |
| | EPEAT | - |
| | Carbon Footprint | Yes |
| Power | Recycled Plastic | 10% ↑ |
| | Power supply | AC100~240V |
| | Type | Internal power |



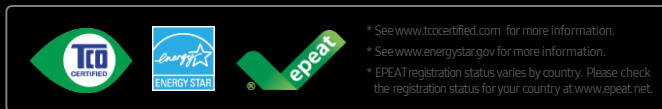
For more information
Go to Link

ViewFinity S6

S60UD 24", 27", 32"

Clean connectivity with incredible color

Connect PCs, tablets and smartphones to the S60UD quickly and cleanly. USB-C transmits everything you need through a single cable: display input, data, power, and Ethernet (LAN). It makes for easier installation, more cost-effective maintenance, and cleaner workstations. The S60UD features an IPS panel with HDR10 and supports over 1 billion colors for accurate, lifelike color and images. Plus, QHD resolution means more content on the screen at once with incredible detail.



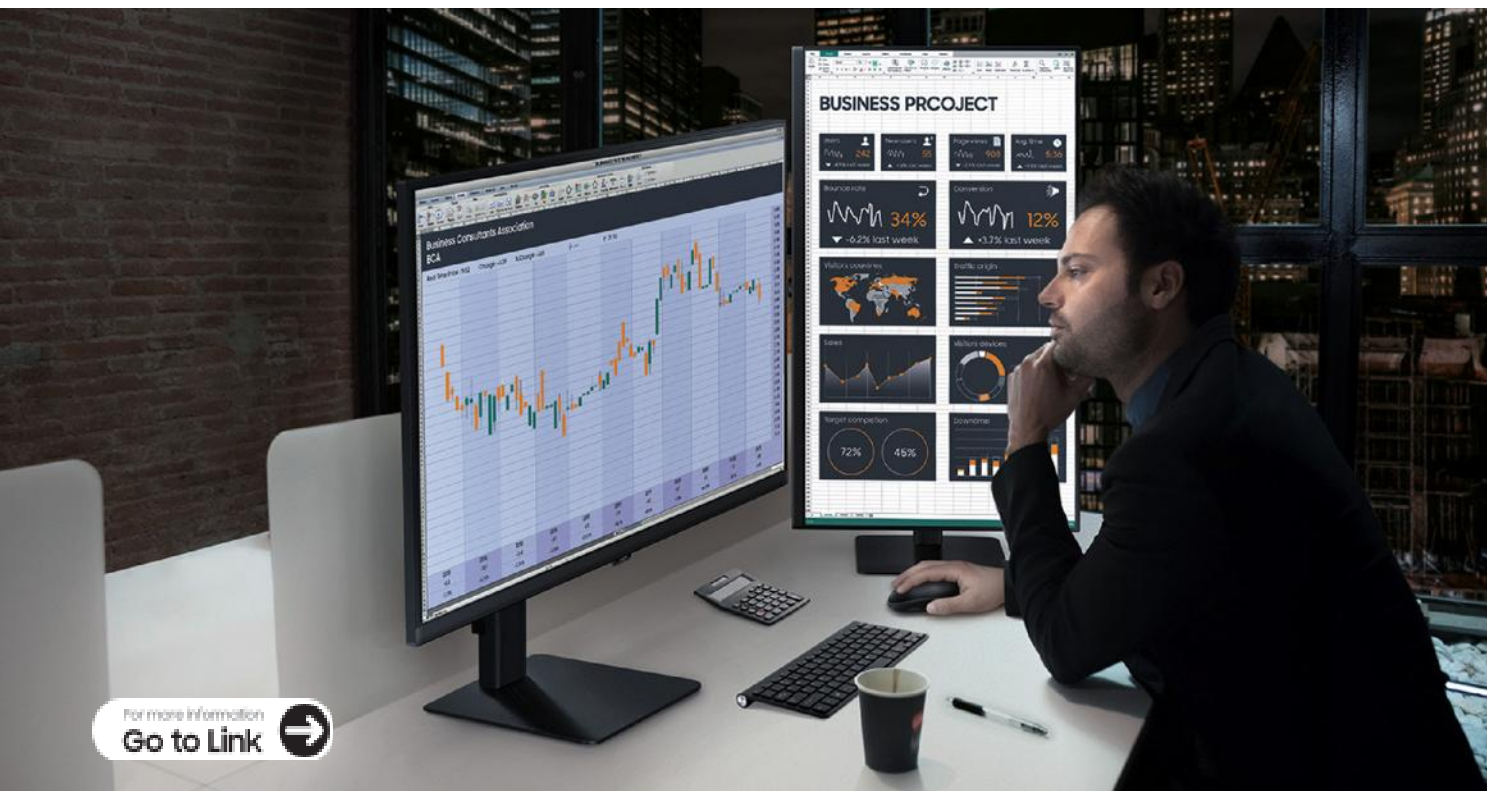
Key Features

- QHD** **QHD resolution**
Benefit from new levels of precision up to 1.7x the pixel density of Full HD.
- IPS** **IPS panel**
Every user can expect a great viewing experience from any angle, in vivid and vibrant color without washing or fade.
- HDR** **1 billion colors with HDR10**
With a wide range of colors, near limitless hues and HDR10, every piece of content becomes a joy to look at and can be experienced exactly as the creator intended.
- USB type-C**
Features a USB type-C port with 90W charging to power your laptop and transmit data with just one cable.
- Daisy Chain**
Connect to compatible PCs and work on a bigger screen, enjoying a simpler dual QHD setup.
- LAN port**
Features a LAN Port which allows a laptop that has no LAN port to simply connect to the monitor for Ethernet use.
- Easy Setup Stand**
Effortlessly create an ideal workspace without any tools or screws. Simply push a button and enjoy flexible convenience.



Specifications

| S60UD | | | | | |
|-----------------------------|----------------------------------|--|--|--|------------|
| | | 24" | 27" | 32" | |
| Display | Screen size | 24" | 27" | 32" | |
| | Flat/Curved | Flat | Flat | Flat | |
| | Resolution | 2,560 x 1,440 | 2,560 x 1,440 | 2,560 x 1,440 | |
| | Aspect ratio | 16:9 | 16:9 | 16:9 | |
| | Panel type | IPS | IPS | IPS | |
| | Brightness (Typical) | 350 cd/m ² | 350 cd/m ² | 350 cd/m ² | |
| | Contrast ratio (Static) | 1,000:1 (Typ.) | 1,000:1 (Typ.) | 1,000:1 (Typ.) | |
| | HDR (High Dynamic Range) | HDR 10 | HDR 10 | HDR 10 | |
| | Color support | Max1B | Max1B | Max1B | |
| | Color coverage | sRGB 99% (Typ.) | sRGB 99% (Typ.) | sRGB 99% (Typ.) | |
| | Viewing angle (H/V) | 178° / 178° | 178° / 178° | 178° / 178° | |
| | Response time | 5ms (GTG) | 5ms (GTG) | 5ms (GTG) | |
| Frame rate | Max100Hz | Max100Hz | Max100Hz | | |
| Calibration | Factory tuning | - | - | - | |
| | CMS (Color Management Software) | - | - | - | |
| General | Color mode | Entertain / Graphic / Eco / Game Standard / RPG / RTS / FPS / Sports / Original / Custom | Entertain / Graphic / Eco / Game Standard / RPG / RTS / FPS / Sports / Original / Custom | Entertain / Graphic / Eco / Game Standard / RPG / RTS / FPS / Sports / Original / Custom | |
| | PIP (Picture-In-Picture) | 0 | 0 | 0 | |
| | PBP (Picture-By-Picture) | 0 | 0 | 0 | |
| | Daisy Chain | 0 | 0 | 0 | |
| | KVM Switch | 0 | 0 | 0 | |
| | Auto Source Switch | 0 | 0 | 0 | |
| | Windows certification | Windows 11 | Windows 11 | Windows 11 | |
| | Adaptive Picture | 0 | 0 | 0 | |
| | Eye Saver Mode | 0 | 0 | 0 | |
| | Flicker Free | 0 | 0 | 0 | |
| | Interface | DisplayPort | 1 EA (1.4) | 1 EA (1.4) | 1 EA (1.4) |
| | | DisplayPort Out | 1 EA (1.4) | 1 EA (1.4) | 1 EA (1.4) |
| Mini-DisplayPort | | - | - | - | |
| HDMI | | 1 EA (2.0) | 1 EA (2.0) | 1 EA (2.0) | |
| USB ports | | 3.0 x 3 EA | 3.0 x 3 EA | 3.0 x 3 EA | |
| USB type-C | | 1 EA (90W) | 1 EA (90W) | 1 EA (90W) | |
| Thunderbolt | | - | - | - | |
| Version of Thunderbolt | | - | - | - | |
| Ethernet (LAN) | | 1 EA | 1 EA | 1 EA | |
| WiFi | | - | - | - | |
| Bluetooth | | - | - | - | |
| Speaker | | - | - | - | |
| Built-in camera | | - | - | - | |
| Windows Hello certification | | - | - | - | |
| Design | Stand type | HAS PIVOT | HAS PIVOT | HAS PIVOT | |
| | HAS (Height-Adjustable Stand) | 120mm(±5.0mm) | 120mm(±5.0mm) | 120mm(±5.0mm) | |
| | Tilt | -2.0°(±2.0°)~25.0°(±2.0°) | -2.0°(±2.0°)~25.0°(±2.0°) | -2.0°(±2.0°)~25.0°(±2.0°) | |
| | Swivel | -30.0°(±3.0°)~30.0°(±3.0°) | -30.0°(±3.0°)~30.0°(±3.0°) | -30.0°(±3.0°)~30.0°(±3.0°) | |
| | Pivot | -92.0°(±2.0°)~92.0°(±2.0°) | -92.0°(±2.0°)~92.0°(±2.0°) | -92.0°(±2.0°)~92.0°(±2.0°) | |
| | Wall mount | 100 x 100 | 100 x 100 | 100 x 100 | |
| | Set dimension with stand (WxHxD) | 540.7 x 535.9 x 220 | 612.9 x 556.6 x 220 | 713.9 x 585 x 220 | |
| | Set weight with stand | 5.4 kg | 6.1 kg | 7.2 kg | |
| Eco | Energy Star | Yes | Yes | Yes | |
| | TCO | Yes | Yes | Yes | |
| | EPEAT | Yes | Yes | Yes | |
| | Carbon Footprint | Yes | Yes | Yes | |
| | Recycled Plastic | 17% ↑ | 16% ↑ | 15% ↑ | |
| Power | Power supply | AC100~240V | AC100~240V | AC100~240V | |
| | Type | Internal power | Internal power | Internal power | |



For more information
Go to Link →

ViewFinity S6

S60D 24", 27", 32"

Highly adaptable for all-day productivity

The S60D produces fine-grained details with 1 billion colors to ensure accurate representation, no matter the workflow. Its adjustable stand tilts, pivots and swivels to ensure optimal screen position for all-day ergonomic comfort and its VESA compatible mounting makes for easier installs on walls or mounting arms. Intelligent Eye Care features keep your screen brightness optimized for any lighting environment with Adaptive Picture, while Eye Saver Mode and Flicker Free technology reduce blue light emissions and screen flickers to keep eyes feeling fresh for longer.



Key Features

- QHD** QHD resolution
Benefit from new levels of precision up to 1.7x the pixel density of Full HD.
- IPS** IPS panel
Every user can expect a great viewing experience from any angle, in vivid and vibrant color without washing or fade.
- HDR** 1 billion colors with HDR10
With a wide range of colors, near limitless hues and HDR10, every piece of content becomes a joy to look at and can be experienced exactly as the creator intended.

Easy Setup Stand
Effortlessly create an ideal workspace without any tools or screws. Simply push a button and enjoy flexible convenience.

Ergonomic Design
Adjust the positioning of the screen in a variety of ways to capture the best viewing angle while ensuring maximum comfort.

Specifications

| | | S60D | | |
|-----------------------------|----------------------------------|--|--|--|
| | | 24" | 27" | 32" |
| Display | Screen size | 24" | 27" | 32" |
| | Flat/Curved | Flat | Flat | Flat |
| | Resolution | 2,560 x 1,440 | 2,560 x 1,440 | 2,560 x 1,440 |
| | Aspect ratio | 16:9 | 16:9 | 16:9 |
| | Panel type | IPS | IPS | IPS |
| | Brightness (Typical) | 350 cd/m ² | 350 cd/m ² | 350 cd/m ² |
| | Contrast ratio (Static) | 1,000:1 (Typ.) | 1,000:1 (Typ.) | 1,000:1 (Typ.) |
| | HDR (High Dynamic Range) | HDR 10 | HDR 10 | HDR 10 |
| | Color support | Max1B | Max1B | Max1B |
| | Color coverage | sRGB 99% (Typ.) | sRGB 99% (Typ.) | sRGB 99% (Typ.) |
| | Viewing angle (H/V) | 178° / 178° | 178° / 178° | 178° / 178° |
| | Response time | 5ms (GTG) | 5ms (GTG) | 5ms (GTG) |
| Frame rate | Max100Hz | Max100Hz | Max100Hz | |
| Calibration | Factory tuning | - | - | - |
| | CMS (Color Management Software) | - | - | - |
| General | Color mode | Entertain / Graphic / Eco / Game Standard / RPG / RTS / FPS / Sports / Original / Custom | Entertain / Graphic / Eco / Game Standard / RPG / RTS / FPS / Sports / Original / Custom | Entertain / Graphic / Eco / Game Standard / RPG / RTS / FPS / Sports / Original / Custom |
| | PIP (Picture-In-Picture) | 0 | 0 | 0 |
| | PBP (Picture-By-Picture) | 0 | 0 | 0 |
| | Daisy Chain | 0 | 0 | 0 |
| | KVM Switch | 0 | 0 | 0 |
| | Auto Source Switch | 0 | 0 | 0 |
| | Windows certification | Windows 11 | Windows 11 | Windows 11 |
| | Adaptive Picture | 0 | 0 | 0 |
| | Eye Saver Mode | 0 | 0 | 0 |
| | Flicker Free | 0 | 0 | 0 |
| Interface | DisplayPort | 1 EA (1.4) | 1 EA (1.4) | 1 EA (1.4) |
| | DisplayPort Out | - | - | - |
| | Mini-DisplayPort | - | - | - |
| | HDMI | 1 EA (2.0) | 1 EA (2.0) | 1 EA (2.0) |
| | USB ports | 3.0 x 3 EA | 3.0 x 3 EA | 3.0 x 3 EA |
| | USB type-C | - | - | - |
| | Thunderbolt | - | - | - |
| | Version of Thunderbolt | - | - | - |
| | Ethernet (LAN) | - | - | - |
| | WiFi | - | - | - |
| | Bluetooth | - | - | - |
| | Speaker | - | - | - |
| | Built-in camera | - | - | - |
| Windows Hello certification | - | - | - | |
| Design | Stand type | HAS PIVOT | HAS PIVOT | HAS PIVOT |
| | HAS (Height-Adjustable Stand) | 120mm(±5.0mm) | 120mm(±5.0mm) | 120mm(±5.0mm) |
| | Tilt | -2.0°(±2.0°)~25.0°(±2.0°) | -2.0°(±2.0°)~25.0°(±2.0°) | -2.0°(±2.0°)~25.0°(±2.0°) |
| | Swivel | -30.0°(±3.0°)~30.0°(±3.0°) | -30.0°(±3.0°)~30.0°(±3.0°) | -30.0°(±3.0°)~30.0°(±3.0°) |
| | Pivot | -92.0°(±2.0°)~92.0°(±2.0°) | -92.0°(±2.0°)~92.0°(±2.0°) | -92.0°(±2.0°)~92.0°(±2.0°) |
| | Wall mount | 100 x 100 | 100 x 100 | 100 x 100 |
| | Set dimension with stand (WxHxD) | 540.7 x 535.9 x 220 | 612.9 x 556.6 x 220 | 713.9 x 585 x 220 |
| Eco | Set weight with stand | 5.4 kg | 6.1 kg | 7.2 kg |
| | Energy Star | Yes | Yes | Yes |
| | TCO | Yes | Yes | Yes |
| | EPEAT | Yes | Yes | Yes |
| | Carbon Footprint | Yes | Yes | Yes |
| | Recycled Plastic | 17% ↑ | 16% ↑ | 15% ↑ |
| Power | Power supply | AC100~240V | AC100~240V | AC100~240V |
| | Type | Internal power | Internal power | Internal power |



For more information
Go to Link

ViewFinity S6

S61F 27"

See more, do more – effortlessly

The S61F packs everything needed into a sleek QHD display that's built for both work and play. With a 100Hz refresh rate and HDR10, visuals stay sharp and smooth whether powering through spreadsheets or reviewing creative content. Its IPS panel delivers rich, accurate color from every angle, while Eye Saver Mode and Flicker Free technology help keep eyes fresh through long sessions. Multiple connectivity options and an adjustable stand simplify desk setup and keep workspaces clean and efficient.

Key Features



QHD resolution

Benefit from new levels of precision up to 1.7x the pixel density of Full HD.



IPS panel

Every user can expect a great viewing experience from any angle, in vivid and vibrant color without washing or fade.



100Hz refresh rate

100Hz refresh rate delivers every frame smoothly for fluid scenes with reduced lag and less ghosting effects.



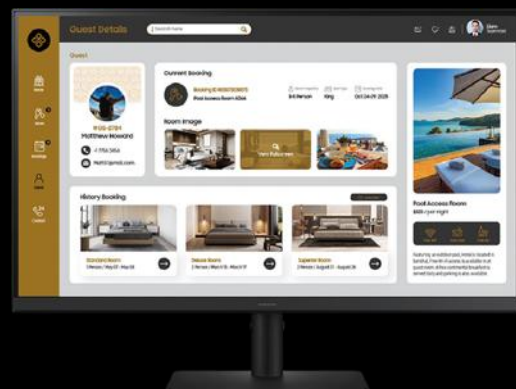
Eye Saver Mode

Protect your vision and stay comfortable, even during long sessions. Stay focused on your work with reduced blue light and screen flicker.



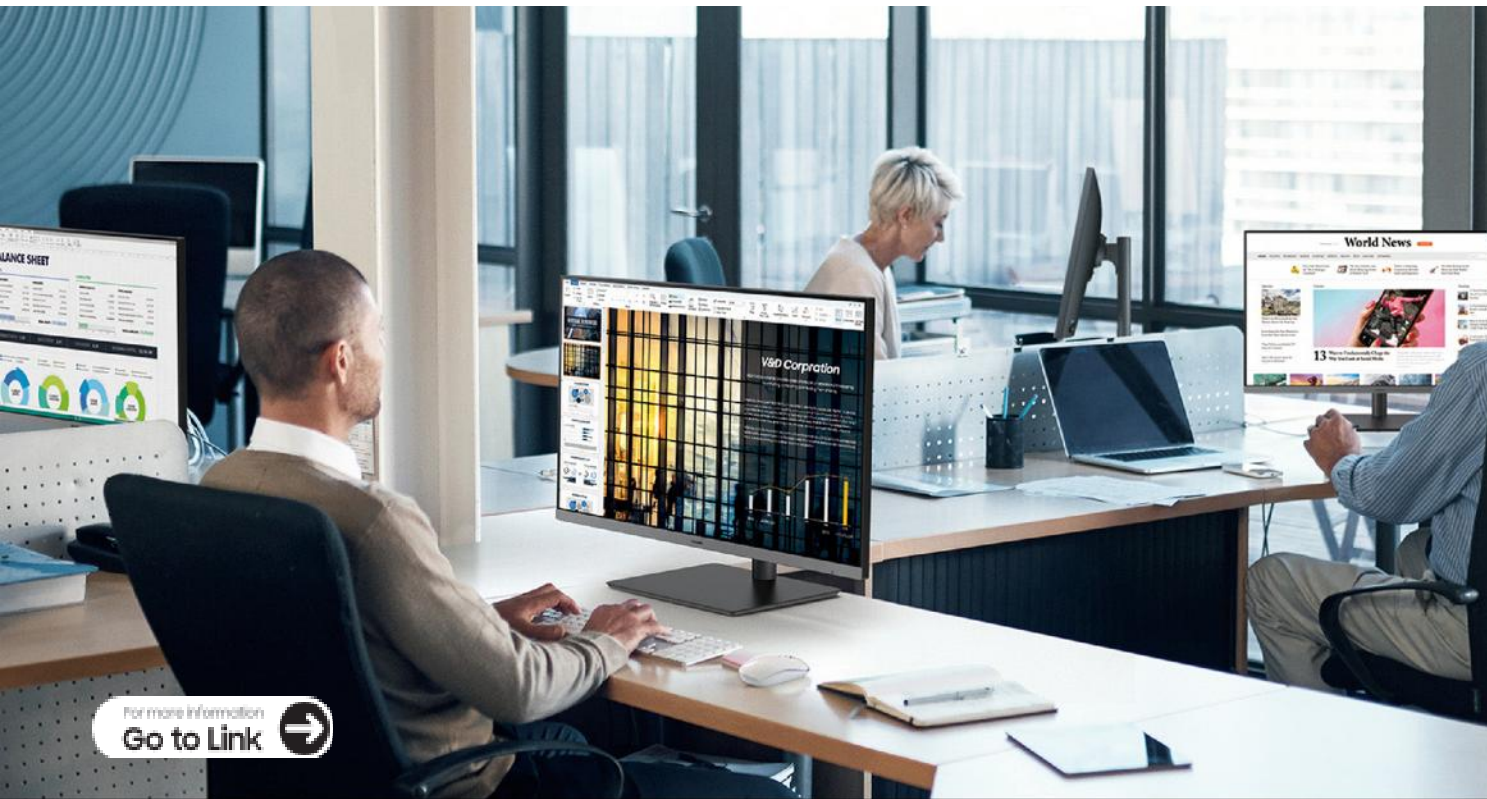
Ergonomic Design

Adjust the positioning of the screen in a variety of ways to capture the best viewing angle while ensuring maximum comfort.



Specifications

| S61F | | |
|-----------------------|----------------------------------|--|
| Display | Screen size | 27" |
| | Flat/Curved | Flat |
| | Resolution | 2,560 x 1,440 |
| | Aspect ratio | 16:9 |
| | Panel type | IPS |
| | Brightness (Typical) | 300 cd/m ² |
| | Contrast ratio (Static) | 1,000:1 (Typ.) |
| | HDR (High Dynamic Range) | - |
| | Color support | Max 16.7M |
| | Color coverage | sRGB 99% (Typ.) |
| | Viewing angle (H/V) | 178° / 178° |
| | Response time | 5ms |
| Frame rate | Max 100Hz | |
| Calibration | Factory tuning | - |
| | CMS (Color Management Software) | - |
| | Color mode | Entertain / Graphic / Eco / Game Standard / RPG / RTS / FPS / Sports / Original / Custom |
| General | PIP (Picture-In-Picture) | - |
| | PBP (Picture-By-Picture) | - |
| | Daisy Chain | - |
| | KVM Switch | - |
| | Auto Source Switch | - |
| | Windows certification | Windows 11 |
| | Adaptive Picture | - |
| | Eye Saver Mode | 0 |
| Flicker Free | 0 | |
| Interface | DisplayPort | 1EA (1.2) |
| | DisplayPort Out | - |
| | Mini-DisplayPort | - |
| | HDMI | 2 EA (2.0) |
| | USB ports | - |
| | USB type-C | - |
| | Thunderbolt | - |
| | Version of Thunderbolt | - |
| | Ethernet (LAN) | - |
| | WiFi | - |
| | Bluetooth | - |
| | Speaker | - |
| | Built-in camera | - |
| | Windows Hello certification | - |
| Design | Stand type | HAS PIVOT |
| | HAS (Height-Adjustable Stand) | 135.0 + 5.0 |
| | Tilt | -4.0°(±2.0°) ~ 24.0°(±2.0°) |
| | Swivel | -45.0°(±2.0°) ~ 45.0°(±2.0°) |
| | Pivot | -92°(±2.0°) ~ 92°(±2.0°) |
| | Wall mount | 100 x 100 |
| | Set dimension with stand (WxHxD) | 616.2 x 538.5 x 192.9 |
| Set weight with stand | 5.4 kg | |
| Eco | Energy Star | - |
| | TCO | - |
| | EPEAT | - |
| | Carbon Footprint | - |
| Power | Recycled Plastic | 35% ↑ |
| | Power supply | AC 100-240V |
| | Type | External Adaptor |



For more information
Go to Link

Essential Monitor S4

S43UF 24" 27"

Stay focused with immersive, fatigue-reducing visuals

The S43UF delivers sharp, fluid visuals and smart connectivity for streamlined workdays. A single USB-C cable powers the screen, transfers data, and connects to wired internet, keeping desks clean and setups simple. Built-in daisy chain support and a 5-port USB hub make it easy to connect more devices, while a 100Hz refresh rate and IPS panel ensure smooth, color-accurate visuals across the entire screen. With full ergonomic adjustability and a TÜV-certified Eye Saver Mode, it's designed for comfort that lasts through every task.



Key Features

- IPS panel**
 Every user can expect a great viewing experience from any angle, in vivid and vibrant color without washing or fade.
- USB type-C**
 Features a USB type-C port with 90W charging to power your laptop and transmit data with just one cable.
- Daisy Chain**
 Connect to compatible PCs and work on a bigger screen, enjoying a simpler dual FHD setup.
- LAN port**
 Features a LAN Port which allows a laptop that has no LAN port to simply connect to the monitor for Ethernet use.
- Ergonomic Design**
 Adjust the positioning of the screen in a variety of ways to capture the best viewing angle while ensuring maximum comfort.



Specifications

| S43UF | | | |
|-----------------------------|----------------------------------|--|--|
| Display | Screen size | 24" | 27" |
| | Flat/Curved | Flat | Flat |
| | Resolution | 1,920 x 1,080 | 1,920 x 1,080 |
| | Aspect ratio | 16:9 | 16:9 |
| | Panel type | IPS | IPS |
| | Brightness (Typical) | 300 cd/m ² | 300 cd/m ² |
| | Contrast ratio (Static) | 1,000:1 (Typ.) | 1,000:1 (Typ.) |
| | HDR (High Dynamic Range) | - | - |
| | Color support | Max 16.7M | Max 16.7M |
| | Color coverage | sRGB 99% (Typ.) | sRGB 99% (Typ.) |
| | Viewing angle (H/V) | 178° / 178° | 178° / 178° |
| | Response time | 5ms | 5ms |
| Frame rate | Max 100Hz | Max 100Hz | |
| Calibration | Factory tuning | - | - |
| | CMS (Color Management Software) | - | - |
| | Color mode | Entertain / Graphic / Eco / Game Standard / RPG / RTS / FPS / Sports / Original / Custom | Entertain / Graphic / Eco / Game Standard / RPG / RTS / FPS / Sports / Original / Custom |
| General | PIP (Picture-In-Picture) | - | - |
| | PBP (Picture-By-Picture) | - | - |
| | Daisy Chain | - | - |
| | KVM Switch | - | - |
| | Auto Source Switch | 0 | 0 |
| | Windows certification | Windows 11 | Windows 11 |
| | Adaptive Picture | - | - |
| | Eye Saver Mode | 0 | 0 |
| | Flicker Free | 0 | 0 |
| | Interface | DisplayPort | 1EA (1.4) |
| DisplayPort Out | | Yes | Yes |
| Mini-DisplayPort | | - | - |
| HDMI | | 1 EA (1.4) | 1 EA (1.4) |
| USB ports | | - | - |
| USB type-C | | 1 EA (90W) | 1 EA (90W) |
| Thunderbolt | | - | - |
| Version of Thunderbolt | | - | - |
| Ethernet (LAN) | | - | - |
| WiFi | | - | - |
| Bluetooth | | - | - |
| Speaker | | - | - |
| Built-in camera | | - | - |
| Windows Hello certification | | - | - |
| Design | Stand type | HAS PIVOT | HAS PIVOT |
| | HAS (Height-Adjustable Stand) | 130.0 + 5.0 | 130.0 + 5.0 |
| | Tilt | -5.0°(±2.0°) ~ 24.0°(±2.0°) | -5.0°(±2.0°) ~ 24.0°(±2.0°) |
| | Swivel | -45.0°(±2.0°) ~ 45.0°(±2.0°) | -45.0°(±2.0°) ~ 45.0°(±2.0°) |
| | Pivot | -2.0°(±2.0°) ~ 92°(±2.0°) | -2.0°(±2.0°) ~ 92°(±2.0°) |
| | Wall mount | 100 x 100 | 100 x 100 |
| | Set dimension with stand (WxHxD) | 539.9 x 518.9 x 219.7 | 611.6 x 539.2 x 219.7 |
| | Set weight with stand | 5.4 kg | 6.1 kg |
| Eco | Energy Star | Yes | Yes |
| | TCO | Yes | Yes |
| | EPEAT | Yes | Yes |
| | Carbon Footprint | - | - |
| | Recycled Plastic | 82% ↑ | 82% ↑ |
| Power | Power supply | AC100 - 240 V (50/60Hz) | AC100 - 240 V (50/60Hz) |
| | Type | Internal power | Internal power |



Essential Monitor S4

S40GD 22", 24", 27"

Productivity without sacrificing comfort

Full HD resolution and a 100Hz refresh rate come together on the S40GD to keep visuals smooth across everyday tasks. The IPS panel delivers consistent clarity and vivid colors at wide angles, while Eye Saver Mode and Flicker Free technology protect vision, even during long work sessions. Game Picture Mode instantly adjusts contrast and detail in dark scenes to elevate gaming and streaming. With VESA compatibility and full ergonomic adjustability—including tilt, swivel, pivot, and height—it's easy to customize for any workspace.



Key Features

- IPS panel**
Benefit from new levels of precision up to 1.7x the pixel density of Full HD.
- 100Hz refresh rate**
100Hz refresh rate delivers every frame smoothly for fluid scenes with reduced lag and less ghosting effects.
- Eye Saver Mode**
Protect your vision and stay comfortable, even during long sessions. Stay focused on your work with reduced blue light and screen flicker.
- Ergonomic Design**
Adjust the positioning of the screen in a variety of ways to capture the best viewing angle while ensuring maximum comfort.



Specifications

| | | S40GD | | |
|-----------------------------|----------------------------------|--|--|--|
| | | 22" | 24" | 27" |
| Display | Screen size | 22" | 24" | 27" |
| | Flat/Curved | Flat | Flat | Flat |
| | Resolution | 1,920 x 1,080 | 1,920 x 1,080 | 1,920 x 1,080 |
| | Aspect ratio | 16:9 | 16:9 | 16:9 |
| | Panel type | IPS | IPS | IPS |
| | Brightness (Typical) | 250 cd/m ² | 250 cd/m ² | 250 cd/m ² |
| | Contrast ratio (Static) | 1,000:1 (Typ.) | 1,000:1 (Typ.) | 1,000:1 (Typ.) |
| | HDR (High Dynamic Range) | - | - | - |
| | Color support | Max16.7M | Max16.7M | Max16.7M |
| | Color coverage | - | - | - |
| | Viewing angle (H/V) | 178° / 178° | 178° / 178° | 178° / 178° |
| Response time | 5ms | 5ms | 5ms | |
| Frame rate | Max100Hz | Max100Hz | Max100Hz | |
| Calibration | Factory tuning | - | - | - |
| | CMS (Color Management Software) | - | - | - |
| General | Color mode | Entertain / Graphic / Eco / Game Standard / RPG / RTS / FPS / Sports / Original / Custom | Entertain / Graphic / Eco / Game Standard / RPG / RTS / FPS / Sports / Original / Custom | Entertain / Graphic / Eco / Game Standard / RPG / RTS / FPS / Sports / Original / Custom |
| | PIP (Picture-In-Picture) | - | - | - |
| | PBP (Picture-By-Picture) | - | - | - |
| | Daisy Chain | - | - | - |
| | KVM Switch | - | - | - |
| | Auto Source Switch | 0 | 0 | 0 |
| | Windows certification | Windows 11 | Windows 11 | Windows 11 |
| | Adaptive Picture | - | - | - |
| | Eye Saver Mode | 0 | 0 | 0 |
| | Flicker Free | 0 | 0 | 0 |
| Interface | DisplayPort | 1EA (1.2) | 1EA (1.2) | 1EA (1.2) |
| | DisplayPort Out | - | - | - |
| | Mini-DisplayPort | - | - | - |
| | HDMI | 2 EA (1.4) | 2 EA (1.4) | 2 EA (1.4) |
| | USB ports | 2.0 x 2 EA | 2.0 x 2 EA | 2.0 x 2 EA |
| | USB type-C | - | - | - |
| | Thunderbolt | - | - | - |
| | Version of Thunderbolt | - | - | - |
| | Ethernet (LAN) | - | - | - |
| | WiFi | - | - | - |
| | Bluetooth | - | - | - |
| | Speaker | - | - / 0 (1W x 2) | - / 0 (1W x 2) |
| | Built-in camera | - | - | - |
| Windows Hello certification | - | - | - | |
| Design | Stand type | HAS PIVOT | HAS PIVOT | HAS PIVOT |
| | HAS (Height-Adjustable Stand) | 105.0 mm (±5.0 mm) | 105.0 mm (±5.0 mm) | 105.0 mm (±5.0 mm) |
| | Tilt | -3.0 (±2.0) - 25.0° (±2.0°) | -3.0 (±2.0) - 25.0° (±2.0°) | -3.0 (±2.0) - 25.0° (±2.0°) |
| | Swivel | -45.0 (±3.0) - 45.0° (±3.0°) | -45.0 (±3.0) - 45.0° (±3.0°) | -45.0 (±3.0) - 45.0° (±3.0°) |
| | Pivot | -92.0 (±2.0) - 92.0° (±2.0°) | -92.0 (±2.0) - 92.0° (±2.0°) | -92.0 (±2.0) - 92.0° (±2.0°) |
| | Wall mount | 100 x 100 | 100 x 100 | 100 x 100 |
| | Set dimension with stand (WxHxD) | 489.9 x 469.2 x 219.0 | 540.7 x 497.7 x 219.0 | 612.7 x 538.3 x 219.0 |
| | Set weight with stand | 3.2 kg | 3.5 kg | 4.0 kg |
| Eco | Energy Star | Yes | Yes | Yes |
| | TCO | Yes | Yes | Yes |
| | EPEAT | Yes | Yes | Yes |
| | Carbon Footprint | 0 | 0 | 0 |
| | Recycled Plastic | 17% ↑ | 16% ↑ | 16% ↑ |
| Power | Power supply | AC100 - 240 V (50/60Hz) | AC100 - 240 V (50/60Hz) | AC100 - 240 V (50/60Hz) |
| | Type | Internal power | Internal power | Internal power |