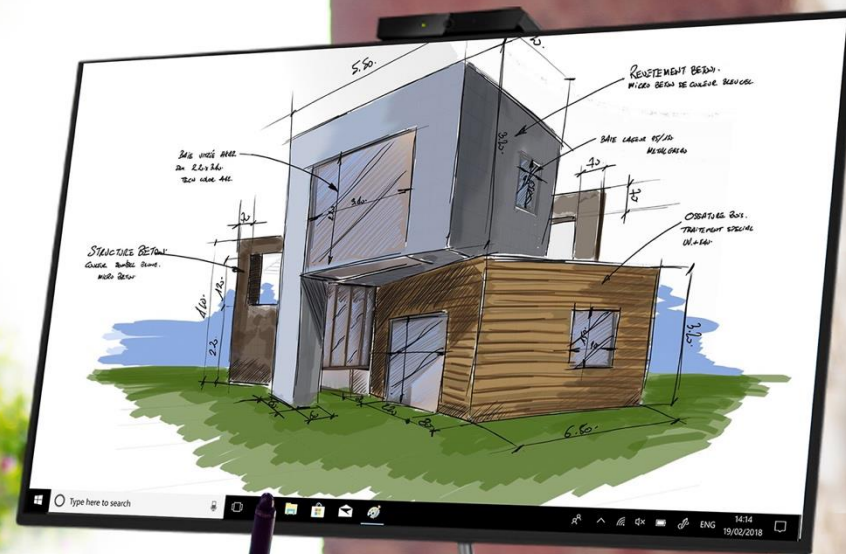


# ThinkCentre

## ThinkCentre M90n Nano and M90n Nano IOT

Lenovo



# ThinkCentre | Formfactors



TWR  
SFF



Tiny



Nano



# ThinkCentre Nano | Pioneer in Desktop Evolution

**Standard Commercial**  
Shared Workspace  
Light-loaded  
Responsiveness

**IoT / Vertical**  
Connectivity  
Enhanced Reliability  
Tailor-made Expandability



***World's Smallest Commercial Desktop PC***

# ThinkCentre Nano | Is The New Big

## ***Uncompromising Performance & Design***

- Core-i7 to Celeron Whiskey Lake CPUs (U-Series 15W)
- Size 0.35L, 35% of a Tiny
- Up to 16GB DDR4 Memory (soldered)
- Up to 2x 512GB PCIe SSD

## ***Ease-of-Use Focused***

- Single cable deployment via Type-C
- Multiple mounting and bracket options
- Expendabilities via dockings



# ThinkCentre Nano | Product Spec At-A-Glance



WxDxH: 179x88x22mm



## **Front I/O:**

- 2x USB3.1 Gen2
- 1x Type-C (USB3.1 Gen2)
- 1x audio combo



## **Rear I/O:**

- 1x DC-in
- 2x USB3.1 Gen2
- 1x DP
- 1x Type-C (USB3.1 Gen2 + DP)
- 1x RJ45 LAN

## **Internal Bay:**

- Memory Down
- 2x M.2 PCIe SSD
- 1x M.2 WiFi

# Nano IoT Product Spec At-A-Glance.



## Nano IoT Front I/O:

- 1x Power-on Button
- 2x RS232
- 1x Type-C (USB 3.1 Gen2, PD)
- 2x USB3.1 Gen2
- 1x audio combo

## Nano IoT Rear I/O:

- 1x DC-in / 1x DP
- 1x USB3.1 Gen2 (i3 CPU) / USB 2.0 (Celeron SKU)
- 1x Type-C (USB 3.1 Gen2, PD, DP)
- 2x RJ45 LAN (Celeron SKU offer Single LAN)
- 1x Kensington lock
- 1x Wi-Fi/BT Antenna

## Nano IoT Internal:

- 2x M.2 Storage
- 1x M.2 Wi-Fi/BT
- 1x M.2 4G
- 1x LoRa (reserved)

# Nano IOT - I/O Box





# Nano IoT – IOBOX Product Spec at-a-Glance



- Manufacturing, Retail, Smart Building
- Flexible with Nano IoT via Type-C I/F
- Extra Legacy, Vertical I/O Offering
- Space for future Customization



**2x PoE**

- 802.3af PSE of Giga Camera



**2x Serial**

- RS232/422/485 of PLC, Inverter



**4x DI & 4x DO**

- Refrigerator Door
- Door Bell
- LED Light



**Wide voltage DC-in**

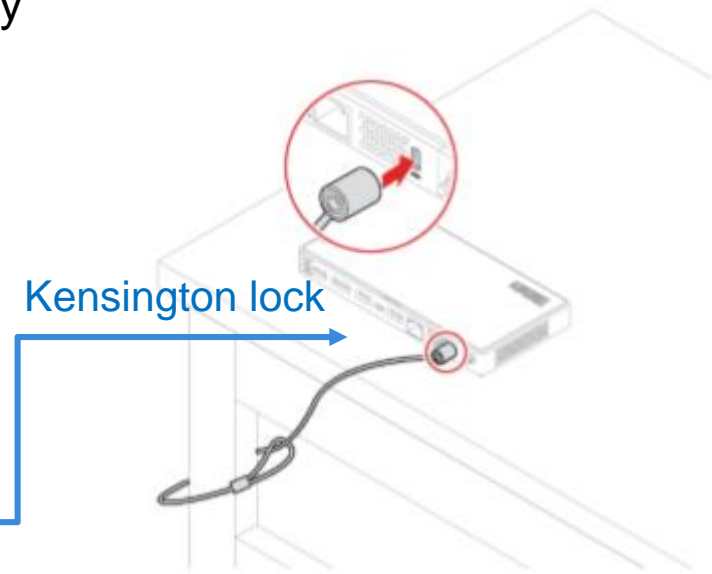
- DC 9~36V wide voltage input.





# Security – Desktops specific

- **Chassis intrusion switch** – detects if computer cover is properly installed
- **Kensington lock** – connect Kensington cable lock with Nano and lock Nano to a fixture
- **Smart USB protection** –  
‘Read Only’ mode forbids data being copied from PC to USB device  
‘No Access’ mode forbids all USB storage devices
- **Individual USB port disablement** – all USB ports are numbered and can be disabled independently

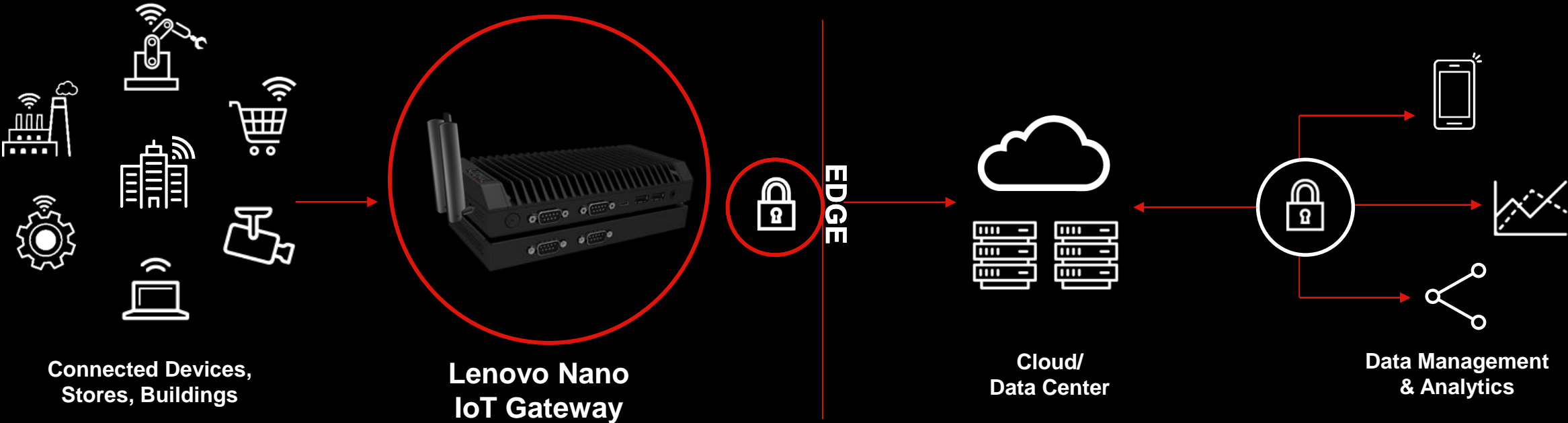


# Lenovo's Nano IoT Gateway

Bridges devices & sensors moving big data to the cloud/datacenter securely

Delivers CPU computing power at the edge powering real-time analytics

Solves latency and security concerns



# + ThinkCentre Nano Accessories



ThinkCentre Nano I-O  
Expansion Box

SBB



ThinkCentre Nano  
Monitor Clamp

SBB



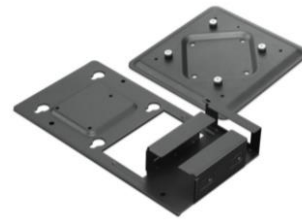
ThinkCentre Nano  
VESA Mount

SBB



ThinkCentre Nano DIN  
Rail Mount

SBB



ThinkCentre Nano  
Power Cage

SBB



ThinkCentre Nano TIO  
Module Bracket

SBB

# ThinkCentre Nano | Deploy Anywhere

## Easy Cable Management

- 1 USB-C cable connecting to monitor, saving setup time

## Variety of Mounting Solutions

- Extreme small footprint, flexible to set around workspace

- Powered via USB-C  
1 cable for power + display



*\*selected monitors only*

w/ Monitor    Monitor Clamp



Mounted on the back of monitor

TIO Compatible



Supported via **TIO cube**

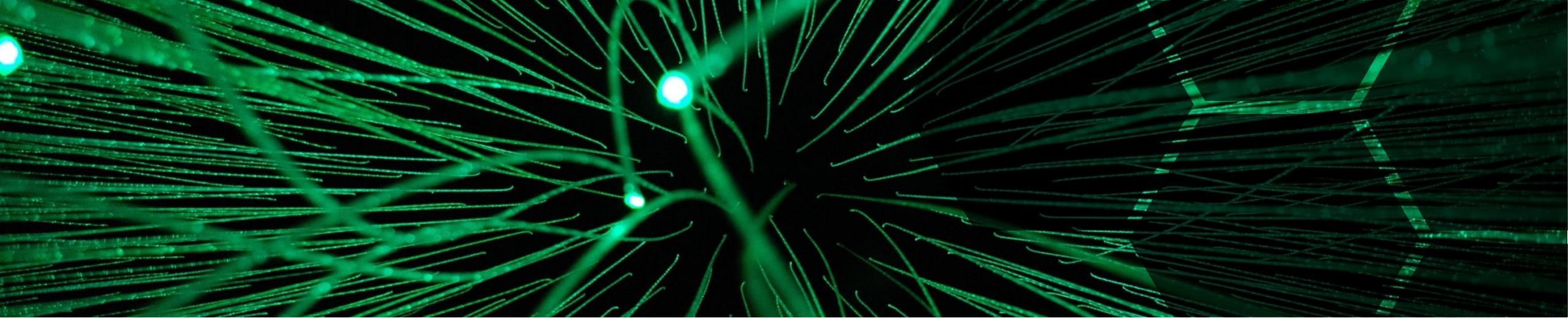
Wall Mount    VESA



DIN Rail







## GREEN CERTIFICATION

Take a step towards green work environment with the ThinkCentre M90n Nano and ThinkCentre M90n Nano IoT. Engineered for energy efficiency, the Nano series of desktops reduce power consumption. These devices meet strict environmental guidelines to help minimize the environmental impact without compromising on performance and features.

The **ErP LOT 3** and **ENERGY STAR® 7.0** compliance ensures your desktop's power consumption is in check even in low power states—making it energy and cost efficient. The **EPEAT™ Silver** and **RoHS CERTIFICATION** enable sustainable practices throughout your desktop's lifecycle. Certified by **TÜV LOW NOISE CERTIFICATION**, your device performs noiselessly so that you carry out your important business tasks with least disturbance.



# USB C monitor – One cable attach



ThinkVision P44w



ThinkVision T25m





# User Scenario | Healthcare

Medical  
Cart



Power  
Bank\*

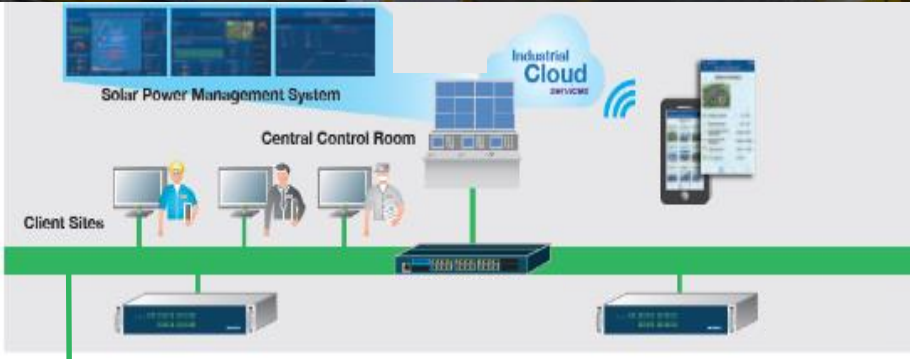


- Business level computing power
- Powered by power bank as UPS– up to 12hrs operating hours!



# User Scenario | Manufacturing

(IoT Gateway & Edge Computing)



Cameras

Sirens



Displays

Invertors

Sensors

Ethernet

Track Real-Time | Operators Manage Alerts | SCADA Systems Monitor  
Engineered for 24/7/365 Uptime in Rugged Conditions (Shock/Temp)



**thanks.**

**Different is better**

