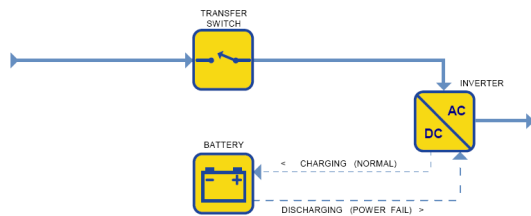


ALSO Schweiz AG
 Meierhofstrasse 5 · CH-6032 Emmen
 Telefon +41 41 266 11 11 · Telefax +41 41 266 11 22 · www.also.ch



Smart-UPS - line interactive UPS overview -

Advantages of line interactive:



- ▶ High efficiency
- ▶ low cost
- ▶ small size
- ▶ Battery backup power
- ▶ Surge protection
- ▶ Automatic voltage regulation

UPS Type	SC420I	SC450RMI1U	SC620I	SMT750I
Power Input	IEC-320 C14 incl. Cable	IEC-320 C14 incl. Cable	IEC-320 C14 incl. Cable	IEC-320 C14 incl. Cable
ALSO part no.	8500331H	8500332H	8500333H	8500767H
Form factor	Tower	1U Rackmount	Tower	Tower
Capacity	420 VA / 260 Watt	450 VA / 280 Watt	620 VA / 390 Watt	750 VA / 500 Watt
Extended runtime	no	no	no	no
Bypass	-	-	-	-
Power Output	(1) IEC 320 C13, (3) IEC 320 C13	(4) IEC 320 C13	(1) IEC 320 C13, (3) IEC 320 C13	(6) IEC 320 C13
Weight (kg)	9	10	12.50	13
Communication	RS-232	RS-232	RS-232	USB / SmartSlot
VP price *	233.00	333.00	330.00	421.00
EP price	145.00	214.00	210.00	275.00
UPS Management Modul	no	no	no	optional

*) Incl. Tax

Es gelten die Allgemeinen Geschäftsbedingungen der ALSO Schweiz AG (Juli 2007).

ALSO Schweiz AG
 Meierhofstrasse 5 · CH-6032 Emmen
 Telefon +41 41 266 11 11 · Telefax +41 41 266 11 22 · www.also.ch



Smart-UPS - line interactive UPS overview -

UPS Type	SMT750RMI2U	SC1000I	SC1500I	SMT1000I	SMT1000RMI2U	SMT1500I
						
Power Input	IEC-320 C14 incl. Cable 	IEC-320 C14 incl. Cable 	IEC-320 C14 incl. Cable 	IEC-320 C14 incl. Cable 	IEC-320 C14 incl. Cable 	IEC-320 C14 incl. Cable 
ALSO part no.	8500945H	8500343H	8500330H	8500763H	8500943H	8500764H
Form factor	2U Rackmount	2U Rackmount / Tower	2U Rackmount / Tower	Tower	2U Rackmount	Tower
Capacity	750 VA / 500 Watt	1'000 VA / 600 Watt	1'500 VA / 865 Watt	1000 VA / 670 Watt	1'500 VA / 700 Watt	1440 VA / 980 Watt
Extended runtime	no	no	no	no	no	no
Bypass	-	-	-	-	-	-
Power Output	(4) IEC 320 C13	(4) IEC 320 C13	(4) IEC 320 C13	(8) IEC 320 C13	(4) IEC 320 C13	(8) IEC 320 C13
Weight (kg)	17	16	21	19	28	24
Communication	Serial RJ45 / USB / SmartSlot	RS-232 / USB	RS-232 / USB	USB / SmartSlot	Serial RJ45 / USB / SmartSlot	USB / SmartSlot
VP price *	611.00	525.00	685.00	599.00	833.00	825.00
EP price	411.00	337.00	439.00	393.00	546.00	535.00
UPS Management Modul	optional	no	no	optional	optional	optional

*) Incl. Tax

ALSO Schweiz AG
 Meierhofstrasse 5 · CH-6032 Emmen
 Telefon +41 41 266 11 11 · Telefax +41 41 266 11 22 · www.also.ch



Smart-UPS - line interactive UPS overview -

UPS Type	SMT1500RMI2U	SMT2200I	SMT2200RMI2U	SMT3000I	SMT3000RMI2U	SUA5000RMI5U
						
Power Input	IEC-320 C14 incl. Cable 	IEC-320 C20 Cable optional 8500352H 	IEC-320 C20 Cable optional 8500352H 	IEC-320 C20 Cable optional 8500352H 	IEC-320 C20 Cable optional 8500352H 	Hard Wire 3-wire
ALSO part no.	8500944H	S8500765H	S8500946H	S8500766H	S8500947H	8500182H
Form factor	2U Rackmount	Tower	2U Rackmount	Tower	2U Rackmount	5U Rackmount
Capacity	1'500 VA / 1000 Watt	2'200 VA / 1'980 Watt	2'200 VA / 1'980 Watt	3'000 VA / 2'700 Watt	3'000 VA / 2'700 Watt	5'000 VA / 4'000 Watt
Extended runtime	no	no	no	no	no	no
Bypass	-	-	-	-	-	-
Power Output	(4) IEC 320 C13	(8) IEC 320 C13, (1) IEC 320 C19	(8) IEC 320 C13, (1) IEC 320 C19	(8) IEC 320 C13, (1) IEC 320 C19	(8) IEC 320 C13, (1) IEC 320 C19	(8) IEC 320 C13, (2) IEC 320 C19
Weight (kg)	29	51	51	56	51	98
Communication	Serial RJ45 / USB / SmartSlot	USB / SmartSlot	Serial RJ45 / USB / SmartSlot	USB / SmartSlot	Serial RJ45 / USB / SmartSlot	RJ45 / RS-232
VP price *	1'043.00	1'295.00	1'715.00	1'985.00	2'174.00	4'218.00
EP price	683.00	790.00	1'135.00	1'209.00	1'451.00	2'604.00
UPS Management Modul	optional	optional	optional	optional	optional	inclusive







*) Incl. Tax

Es gelten die Allgemeinen Geschäftsbedingungen der ALSO Schweiz AG (Juli 2007).

ALSO Schweiz AG
 Meierhofstrasse 5 · CH-6032 Emmen
 Telefon +41 41 266 11 11 · Telefax +41 41 266 11 22 · www.also.ch



Smart-UPS - line interactive UPS overview -

UPS Type	AP9630	AP9631	C13 to C14	C13 to C14	C19 to C20	AP9827
						
Power Input	UPS Network Management Card 2	UPS Network Management Card 2 with Environmental Monitoring (Temperature Sensor)	2.5 m	0.6 m	0.6 m	Simple Signaling UPS Cable USB to RJ45
ALSO part no.	8500184H	8500185H	8500304H	8500323H	8500324H	8500281H
Form factor			1 Pice	5 Pices	1 Pice	1 Pice
Capacity						
Extended runtime						
Bypass						
Power Output						
Weight (kg)	0.4	.04				
Communication	RJ45	RJ45				
VP price *	373.00	616.00	30.00	65.00	30.00	58.00
EP price	253.00	408.00	20.00	42.00	22.00	37.00
UPS Management Modul						

*) Incl. Tax