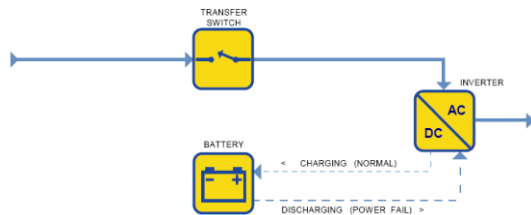




## Smart-UPS SMX Extended runtime models - line interactive overview -

### Advantages of line interactive Extended runtime models:



- ▶ Extended runtime
- ▶ Additional extended runtime options
- ▶ High efficiency
- ▶ low cost
- ▶ small size
- ▶ Battery backup power
- ▶ Surge protection
- ▶ Automatic voltage regulation

UPS Type	SMX750I	SMX1000I	SMX1500RMI2U	SMX1500RMI2UNC
<b>Power Input</b>	IEC-320 C14 incl. Cable	IEC-320 C14 incl. Cable	IEC-320 C14 incl. Cable	IEC-320 C14 incl. Cable
<b>ALSO part no.</b>	1597834	1597835	1597836	1600477
<b>Form factor</b>	2U Rack / Tower	2U Rack / Tower	2U Rackmount / Tower	2U Rackmount / Tower
<b>Capacity</b>	750 VA / 600 Watt	1'000 VA / 800 Watt	1'440 VA / 1'200 Watt	1'440 VA / 1'200 Watt
<b>Extended runtime</b>	yes	yes	yes	yes
<b>Bypass</b>	-	-	-	-
<b>Power Output</b>	(8) IEC 320 C13	(8) IEC 320 C13	(8) IEC 320 C13	(8) IEC 320 C13
<b>Weight (kg)</b>	22	23	25	25
<b>Communication</b>	USB/ SmartSlot	USB/ SmartSlot	USB/ SmartSlot	USB/ SmartSlot
<b>UPS Management Modul</b>	optional	optional	optional	<b>incl. Network Management Card 10/100 Base-T (AP9631)</b>
<b>Extended Run Option</b>	SMX48RMBP2U / 1597852	SMX48RMBP2U / 1597852	SMX48RMBP2U / 1597852	SMX48RMBP2U / 1597852









## Smart-UPS SMX Extended runtime models - line interactive overview -

UPS Type	SMX2200HV	SMX2200RMHV2U	SMX3000HV	SMX3000RMHV2U	SMX3000RMHV2UNC
					
<b>Power Input</b>	IEC-320 C20  Cable optional  1102577	IEC-320 C20  Cable optional  1102577	IEC-320 C20  Cable optional  1102577	IEC-320 C20  Cable optional  1102577	IEC-320 C20  Cable optional  1102577
<b>ALSO part no.</b>	9362763	9362752	9362765	9362744	9362745
<b>Form factor</b>	Tower	2U Rackmount / Tower	4U Rackmount / Tower	2U Rackmount / Tower	2U Rackmount / Tower
<b>Capacity</b>	1'980 VA / 2'200 Watt	2'200 VA / 1'980 Watt	3'000 VA / 2'700 Watt	3'000 VA / 2'700 Watt	3'000 VA / 2'700 Watt
<b>Extended runtime</b>	yes	yes	yes	yes	yes
<b>Bypass</b>	-	-	-	-	-
<b>Power Output</b>	(8) IEC 320 C13, (2) IEC 320 C19	(8) IEC 320 C13, (1) IEC 320 C19	(8) IEC 320 C13, (3) IEC 320 C19	(8) IEC 320 C13, (1) IEC 320 C19	(8) IEC 320 C13, (1) IEC 320 C19,
<b>Weight (kg)</b>	39	38	3	38	38
<b>Communication</b>	USB/ SmartSlot	USB/ SmartSlot	USB/ SmartSlot	USB/ SmartSlot	RJ-45 / USB
<b>UPS Management Modul</b>	optional	optional	optional	optional	<b>incl. Network Management Card 10/100 Base-T (AP9631)</b>
<b>Extended Run Option</b>	SMX120BP / 1986423	SMX120RMBP2U / 1703108	SMX120BP / 1986423	SMX120RMBP2U / 1703108	SMX120RMBP2U / 1703108



## Smart-UPS SMX Extended runtime models - line interactive overview -

UPS Type	SMX3000HVNC	AP9876	AP9630	AP9631	AP9613
					
<b>Power Input</b>	IEC-320 C20 Cable optional  1102577	Power Cord, C19 to IEC309 16A Cord Length 2.5 meter	UPS Network Management	UPS Network Management with Environmental Monitoring (Temperature Sensor)	UPS Network Management with Dry Contact I/O
<b>ALSO part no.</b>	9362764	1102577	1492133	1492134	1929726
<b>Form factor</b>	4U Rackmount / Tower				
<b>Capacity</b>	3'000 VA / 2'700 Watt				
<b>Extended runtime</b>	yes				
<b>Bypass</b>	-				
<b>Power Output</b>	(8) IEC 320 C13, (3) IEC 320 C19				
<b>Weight (kg)</b>	39	0.1	0.4	.04	0.4
<b>Communication</b>	USB/ SmartSlot		RJ45	RJ45	Dry Contact I/O
<b>UPS Management Modul</b>	incl. Network Management Card 10/100 Base-T (AP9631)				
<b>Extended Run Option</b>	SMX120BP / 1986423				