



CA ARCserve® D2D & CA ARCserve Central Applications: *Pricing and Licensing Guide*

Table of Contents

Overview	3
Supported Platforms	3
What's new in CA ARCserve D2D r16 for Windows	3
CA ARCserveD2D r16 for Windows- Editions	5
Desktop/Laptop Solutions & Basic Support	6
CA ARCserve D2D Discontinued / Unpublished SKUs	8
Maintenance, Competitive, & Prior Version Upgrades	9
Licensing Hierarchy	10
NEW!! CA ARCserve Central Applications	10
Supported Platforms	11
4 NEW!! Applications	12
CA ARCserve Central Host-Based VM Backup - Sample Licensing Use Case	13
CA ARCserve Central Virtual Standby - Sample Licensing Use Case	14
Managed Capacity & MSP Offerings	15
Modules with D2D and Replication Bundles	18

This guide, which includes links, and electronically distributed materials, (hereinafter referred to as the "Guide") is for your informational purposes only and is subject to change or withdrawal by CA at any time.

CA ARCserve® D2D & CA ARCserve Central Applications: *Pricing and Licensing Guide*



This guide, which includes links, and electronically distributed materials, (hereinafter referred to as the “Guide”) is for your informational purposes only and is subject to change or withdrawal by CA at any time.

This Guide may not be copied, transferred, reproduced, disclosed, modified or duplicated, in whole or in part, without the prior written consent of CA. This Guide is confidential and proprietary information of CA and may not be disclosed by you or used for any purpose other than as may be permitted in (i) a separate agreement between you and CA governing such redistribution; or (ii) a separate confidentiality agreement between you and CA.

You may print or otherwise make available a reasonable number of copies of the Guide for internal use by you and your employees, provided that all CA copyright notices and legends are affixed to each reproduced copy.

The right to print or otherwise internally make available copies of the Guide is limited to the period during which you are a CA Technologies Data Management partner. Should the partnership terminate for any reason, it is your responsibility to certify in writing to CA that all copies and partial copies of the Guide have been returned to CA or destroyed.

This document is for your informational purposes only. CA assumes no responsibility for the accuracy or completeness of the information.

TO THE EXTENT PERMITTED BY APPLICABLE LAW, CA PROVIDES THIS GUIDE “AS IS” WITHOUT WARRANTY OF ANY KIND, INCLUDING WITHOUT LIMITATION, ANY IMPLIED WARRANTIES OF MERCHANTABILITY, FITNESS FOR A PARTICULAR PURPOSE, OR NON-INFRINGEMENT. CERTAIN INFORMATION IN THIS GUIDE MAY OUTLINE CA’S GENERAL PRODUCT DIRECTION. HOWEVER, CA MAY MAKE MODIFICATIONS TO ANY CA PRODUCT, SOFTWARE PROGRAM, METHOD OR PROCEDURE DESCRIBED IN THIS GUIDE AT ANY TIME WITHOUT NOTICE, AND THE DEVELOPMENT, RELEASE AND TIMING OF ANY FEATURES OR FUNCTIONALITY DESCRIBED IN THIS GUIDE REMAIN AT CA’S SOLE DISCRETION. NOTWITHSTANDING ANYTHING IN THIS GUIDE TO THE CONTRARY, THIS GUIDE SHALL NOT: (I) CONSTITUTE PRODUCT DOCUMENTATION OR SPECIFICATIONS UNDER ANY EXISTING OR FUTURE WRITTEN LICENSE AGREEMENT OR SERVICES AGREEMENT RELATING TO ANY CA SOFTWARE PRODUCT, OR BE SUBJECT TO ANY WARRANTY SET FORTH IN ANY SUCH WRITTEN AGREEMENT; (II) SERVE TO AFFECT THE RIGHTS AND/OR OBLIGATIONS OF CA OR ITS LICENSEES UNDER ANY EXISTING OR FUTURE WRITTEN LICENSE AGREEMENT OR SERVICES AGREEMENT RELATING TO ANY CA SOFTWARE PRODUCT; OR (III) SERVE TO AMEND ANY PRODUCT DOCUMENTATION OR SPECIFICATIONS FOR ANY CA SOFTWARE PRODUCT. THIS DOCUMENT IS FOR YOUR INFORMATIONAL PURPOSES ONLY AND CA ASSUMES NO RESPONSIBILITY FOR THE ACCURACY OR COMPLETENESS OF THE INFORMATION CONTAINED HEREIN. IN NO EVENT WILL CA BE LIABLE TO YOU OR ANY THIRD PARTY FOR ANY LOSS OR DAMAGE, DIRECT OR INDIRECT, FROM THE USE OF THIS GUIDE, INCLUDING WITHOUT LIMITATION, LOST PROFITS, LOST INVESTMENT, BUSINESS INTERRUPTION, GOODWILL, OR LOST DATA, EVEN IF CA IS EXPRESSLY ADVISED IN ADVANCE OF THE POSSIBILITY OF SUCH LOSS OR DAMAGE.

The use of any software product referenced in the Guide is governed by the applicable license agreement and such license agreement is not modified in any way by the terms of this notice.

Copyright © 2011 CA. All rights reserved. CA confidential and proprietary information for CA Technologies internal and Partner use only. Microsoft, Windows, Windows NT, and the Windows logo are trademarks of Microsoft Corporation in the United States, other countries, or both. All other trademarks, trade names, service marks and logos referenced herein belong to their respective companies. No copying or distribution without CA's prior written consent.

CA ARCserve® D2D & CA ARCserve Central Applications: *Pricing and Licensing Guide*



Overview

CA ARCserve D2D is a disk-based recovery solution that simplifies protecting and recovering your business data on both physical and virtual servers from local disk or off-premise cloud storage. It is the only product that has bare-metal restore to dissimilar hardware and block-level, infinite, incremental snapshots, based on the patent-pending I2 technology™ from CA Technologies. In this way, it provides fast backup, rapid restore and reduced storage requirements.

CA ARCserve D2D r16 now offers new capabilities supporting Cloud, Virtualization, Security, and additional Granular Recovery capabilities for Microsoft Exchange. Using its innovative Web 2.0 interface users can easily manage their recovery service-level agreements (SLAs) anytime, anywhere, from desktops to laptops to servers, to single files/folders to databases to emails to the entire system if necessary, all with one easy-to-use product. With CA ARCserve® D2D R16 users now have a robust hybrid data protection solution that offers the best of both worlds.

Supported Platforms

The complete list of currently supported platforms, operating systems and applications are listed on the [CA Support Website](#)

What's new in CA ARCserve D2D r16 for Windows?

- **D2D2C (Disk to Disk to Cloud)**
 - Protects mission-critical data in cloud storage services for remote, offsite protection
 - Use for long-term DR, offsite protection, or archival purposes
- **File Copy / Archive**
 - Copies or Moves files and folders from recovery points for long-term storage archival needs
 - Archive to on or off-premise data repositories
- **Microsoft Exchange Granular Mailbox Recovery**
 - Granularly recover select emails from Exchange Server mailboxes
 - Recover email messages, files, folders, attachments, etc.
- **Simple Virtual Conversion (P2V)**
 - Within D2D UI, export physical recovery points to VHD format
 - Manual or Schedule-based
 - NOTE: Advanced Virtual Conversion and VM Power-on with the new CA ARCserve Central Virtual Standby Application



CA ARCserve® D2D & CA ARCserve Central Applications: *Pricing and Licensing Guide*

- **Windows Explorer Shell Integration**
 - D2D View - recover directly from Windows Explorer
 - Recover to Original or Alternative Destination
 - Copy/Paste, Drag/Drop, Scan, Search, Open
- **Performance Throttling**
 - Customize system performance metrics
 - Fine-tune backup processes for balanced system usage
- **Encryption**
 - Encrypt recovery points with AES-based encryption
 - Supports AES 128, 192, and 256 encryption algorithms
 - Passwords on Recovery Points
- **Auto Update**
 - Download and apply new product/support updates from CA
 - Apply updates manually or automatically
- **Workstation Support (Desktop/Laptops)**
 - New CA ARCserve D2D Workstation Edition
 - Support for Windows XP, Vista, Windows 7 Platforms
 - Support mainstream Desktop/Laptop hardware
- **UI Enhancements**
 - New GUI and usability enhancements throughout making D2D even easier to use
- **Centrally Manageable**
 - D2D servers or workstations can now be centrally managed via CA's NEW CA ARCserve Central Protection Manager
- **Integration with CA ARCserve Backup r16**
 - Migrate CA ARCserve D2D backups to Tape via CA ARCserve Backup console
 - Enable recovery via the CA ARCserve Backup console with a single point of management

All these new features are included at no additional charge!!!



CA ARCserve® D2D & CA ARCserve Central Applications: Pricing and Licensing Guide

CA ARCserve® D2D r16 for Windows – Editions

The 5 Editions of CA ARCserve® D2D for Windows – simple & easy!

1. CA ARCserve D2D r16 Server Small Business Server Edition
2. CA ARCserve D2D r16 Server Standard Edition
3. CA ARCserve D2D r16 Server Advanced Edition
4. CA ARCserve D2D r16 Server Advanced Virtual Edition
5. CA ARCserve D2D r16 Workstation Edition

Editions	Operating System	SQL, Option	Exchange Option	Hyper-V Option	CA ARCserve® Central Applications (Freely Downloadable / Included)	CA ARCserve® Central Applications (Optional \$\$)
CA ARCserveD2D Server Small Business Server Edition	Locked to Microsoft SBS OS Only	✓	✓	✓	✓ Centralized Management App ✓ Reporting App	<input type="checkbox"/> Virtual Standby App <input type="checkbox"/> Host-Based VM Backup App
CA ARCserve D2D Server Standard¹ Edition	Windows Server 2003 and 2008 (32 & 64 bit)	Upgrade to Advanced Edition for SQL, Exchange, and Hyper-V Options			✓ Centralized Management App ✓ Reporting App	<input type="checkbox"/> Virtual Standby App <input type="checkbox"/> Host-Based VM Backup App
CA ARCserve D2D Server Advanced² Edition	Windows Server 2003 and 2008 (32 & 64 bit)	✓	✓	✓	✓ Centralized Management App ✓ Reporting App	<input type="checkbox"/> Virtual Standby App <input type="checkbox"/> Host-Based VM Backup App
CA ARCserve D2D Server Advanced³ Virtual Edition	Windows Server 2003 and 2008 32 & 64 bit (Unlimited Per Host)	✓	✓	✓	✓ Centralized Management App ✓ Reporting App ✓ Virtual Standby App ✓ Host-Based VM Backup App	All Included
CA ARCserve D2D Workstation⁴ Edition	Windows XP, Vista, and Windows 7				✓ Centralized Management App ✓ Reporting App	<input type="checkbox"/> Virtual Standby App <input type="checkbox"/> Host-Based VM Backup App



CA ARCserve® D2D & CA ARCserve Central Applications: Pricing and Licensing Guide

Annotations (superscripted in the rows/columns above)

1. The Server Standard Edition is a part of 'CA ARCserve Backup r16 for Windows Essentials File Server Module with D2D and Replication' SKU. Upgrade available from Standard to Advanced Edition
2. The Server Advanced Edition is a part of 'CA ARCserve Backup r16 for Windows Standard Database Module with D2D and Replication', 'CA ARCserve Backup r16 for Windows Advanced Email Module with D2D and Replication', and 'CA ARCserve Backup r16 for Windows Enterprise Application Module with D2D and Replication' SKUs
3. Provides unlimited VM Guest protection on a "per Host basis," for VMware, Hyper-V and XenServer as well as Host-level protection for VMware. Additional license required for each host server. License is not transferrable to multiple host servers.
4. Minimum quantity 5 units. Offers available in 5, 10, 25, 50, and >50 units volume licensing SKUs

Note: Unlimited i2 backups – infinite incremental and Bare Metal Recovery to original and alternate systems are part of all CA ARCserve® D2D Editions

Desktop/Laptop Protection

CA ARCserve D2D r16 adds support for Laptops/Desktop Operating Systems – Windows XP, Windows Vista and Windows 7. *(Please refer the compatibility matrix for more details.)*

CA ARCserve D2D workstation Edition is now available in 5, 10, 25, 50, 100, 250, 500 packs. *(Workstation Edition pricing starts at 89 USD/workstation in a 5 pack)*

Editions	Available Support	Volume Discount
CA ARCserve D2D r16 Workstation Edition 5 Pack	Basic Support	0%
CA ARCserve D2D r16 Workstation Edition 10 Pack	Basic Support	0%
CA ARCserve D2D r16 Workstation Edition 25 Pack	Enterprise Support	5%
CA ARCserve D2D r16 Workstation Edition 50 Pack	Enterprise Support	10%
CA ARCserve D2D r16 Workstation Edition 100 Pack	Enterprise Support	15%
CA ARCserve D2D r16 Workstation Edition 250 Pack	Enterprise Support	20%
CA ARCserve D2D r16 Workstation Edition 500 Pack	Enterprise Support	25%



CA ARCserve® D2D & CA ARCserve Central Applications: *Pricing and Licensing Guide*

Basic support model

- Introduced Basic Support model for Workstation for less than 25 license pack:
 - Support for customers with license packs of less the 25 licensed, purchased at one time
 - 24x7 access to CA support online
 - Support Hours - 12x5
 - Product information and documentation available on support.ca.com
 - Standard content package developed by support(tech docs, videos, Ask CA as needed)
 - Access and updated content from Ask CA virtual agent
 - Access to user communities, forums, exchanges
 - Access to Live Chat through ASK CA
 - Limited to five(5) live chat sessions per year
 - Product release and version updates from support.ca.com
 - Product fixes downloadable from support.ca.com
 - Alerts through Tech Insider subscription.

Customer capabilities when purchasing CA ARCserve D2D with “Basic” maintenance

	Via non-logged in facility on CA Support Online	When logged into CA Support Online	Via Phone (GSC)
View CA ARCserve D2D documentation	yes	yes	N/A
Download CA ARCserve D2D product	yes	yes	N/A
Download CA ARCserve D2D fixes and solutions	yes	yes	N/A
Open a chat session to get product support	yes	not part of logged-in CSO capabilities	N/A



CA ARCserve® D2D & CA ARCserve Central Applications: *Pricing and Licensing Guide*

CA ARCserve D2D r15 SKUs Discontinued / Unpublished in CA ARCserve D2D r16

Editions	Operating System	I2 Backups	Bare Metal Recovery	SQL, Option	Exchange Option	Hyper-V Option
CA ARCserve® D2D Server Basic Edition	Windows Server 2003 and 2008 (32 & 64 bit)		✓			
CA ARCserve D2D Server Windows Foundation Server Edition	Windows Foundation Server R2	✓	✓			
CA ARCserve D2D Microsoft SQL Plug-in	Microsoft SQL Server 2003, 2008			✓		
CA ARCserve D2D Microsoft Exchange Plug-in	Microsoft Exchange Server 2003, 2007, 2010				✓	
CA ARCserve D2D Workstation Microsoft Hyper-V Plug-in	Microsoft Windows 2008 Hyper-V, Windows 2008 R2 Hyper-V					✓



CA ARCserve® D2D & CA ARCserve Central Applications: Pricing and Licensing Guide

Maintenance, Competitive, & Prior Version Upgrades

r15 Editions	r16 Editions	Current Maint	Upgrade
CA ARCserve D2D r15 for Windows Server Basic Edition	CA ARCserve D2D r16 for Windows Server Standard Edition	Free of charge upgrade, followed by Maintenance renewal in the new Edition	Same 36% Discount for <u>Competitive</u> or <u>Prior Version</u> Upgrades
CA ARCserve D2D r15 for Windows Server Foundation Server Edition			
CA ARCserve D2D r15 for Windows Server Standard Edition			
CA ARCserve D2D r15 for Windows Server Advanced Edition	CA ARCserve D2D r16 for Windows Server Advanced Edition	Free of charge upgrade, followed by Maintenance renewal in the new Edition for customers with current Basic or Standard Edition License PLUS 1 Plug-in License	Same 36% Discount for <u>Competitive</u> or <u>Prior Version</u> Upgrades
CA ARCserve D2D r15 for Windows Server Basic Edition PLUS... any license of SQL, Exchange, or Hyper-V Plug-in			
CA ARCserve D2D r15 for Windows Server Standard Edition PLUS... any license of SQL, Exchange, or Hyper-V Plug-in			
CA ARCserve D2D r15 for Windows Server Small Business Server Edition	CA ARCserve D2D r16 for Windows Server Small Business Server Edition	Entitled to Next Version	Same 36% Discount for <u>Competitive</u> or <u>Prior Version</u> Upgrades
CA ARCserve D2D r15 for Windows Server VM Protection per Host License	CA ARCserve D2D r16 for Windows Server Advanced Virtual Edition	Free of charge upgrade, followed by Maintenance renewal in the new Advanced Virtual Edition. Easier name, additional functionality, same \$\$	Same 36% Discount for <u>Competitive</u> or <u>Prior Version</u> Upgrades

Notes:

1. Active Maintenance: Customers who purchased CA ARCserve D2D r15 Server Basic Edition or CA ARCserve D2D r15 Foundation Edition can upgrade to CA ARCserve D2D r16 Server Standard Edition at no additional cost/charge.
2. Maintenance Expired: Customers can purchase the CA ARCserve D2D r16 Server Standard Edition upgrade SKU.
3. CA ARCserve D2D r16 for Windows Server Advanced Virtual Edition **per Host License** and CA ARCserve D2D r16 for Windows Server Advanced Virtual Edition **per Socket License** are now available

CA ARCserve D2D supports Windows servers and workstations, both physical and virtual. CA ARCserve D2D r16 code base/installation is the same from desktop to laptop to servers. However, proper licensing must be purchased for CA ARCserve D2D to be activated.



CA ARCserve® D2D & CA ARCserve Central Applications: *Pricing and Licensing Guide*

Licensing Hierarchy

CA ARCserve® D2D Edition	Will Work* On
CA ARCserve D2D Advanced Virtual Edition	Virtual Infrastructure Protection Only. Provides protection of your entire Windows virtual environment. If the VMware proxy server is installed on a physical machine or the Hyper-V host needs to be protected, separate licenses need to be purchased.
CA ARCserve D2D Server Advanced Edition	All file servers, SBS, Storage Server and Workstation systems – physical and virtual. * As per support matrix.
CA ARCserve D2D Server Standard Edition	All file servers, SBS, Storage Server and Workstation systems – physical and virtual * As per support matrix
CA ARCserve D2D Server Small Business Server Edition	All SBS and Workstation systems – physical and virtual * As per support matrix
CA ARCserve D2D Workstation Edition	Only Workstation systems – physical and virtual

NEW!! CA ARCserve Central Applications

New CA ARCserve Central Applications offer flexibility to easily integrate new capabilities across the CA ARCserve Family of Products and add new functionality into existing CA ARCserve environments. Users can improve recovery time, reduce IT management workload and enhance the backup of their virtualized servers. These new applications unify and centralize the tasks associated with securing and protecting mission-critical systems and data across an entire organization. From Centralized Management and Reporting to new advancements in Virtualization and Cloud-based backup and recovery, CA ARCserve Central Applications bring a whole new level of ease of use and manageability to the CA ARCserve Family of Products.

CA ARCSERVE CENTRAL PROTECTION MANAGER Provides a single web-based console for a centralized view and management of all servers and workstations protected by CA ARCserve® D2D. It includes automated Active Directory® discovery, remote deployment, simplified policy-based administration, Storage Resource Manager (SRM) reporting, status, grouping, search and restore, basic workflow, event logging and more to help simplify management and recovery of servers and workstations across the user's environment.

CA ARCserve® D2D & CA ARCserve Central Applications: *Pricing and Licensing Guide*



CA ARCSERVE CENTRAL REPORTING Provides a centralized view, administration and reporting on all devices, settings and policies running on-premise and off-premise that are protected by CA ARCserve Backup and CA ARCserve D2D. It gives detailed reports, as well as a rollup Dashboard report view, so users can easily understand what is happening across their environment.

CA ARCSERVE CENTRAL HOST-BASED VM BACKUP Uses CA ARCserve D2D to protect a single VMware host environment, performing backup of all VMs via a single-pass backup without having to install CA ARCserve D2D inside each VM. It uses the VMware vSphere™ Changed Block Tracking (CBT) feature to capture the changes since the last backup and enables granular recovery of files and folders from each individual VM. It can also restore supported applications running within a VM, simplifying protection and recovery of virtual servers.

CA ARCSERVE® CENTRAL VIRTUAL STANDBY Makes CA ARCserve D2D backups available to run like regular VMware Virtual Machine Disk (VMDK) or Microsoft Virtual Hard Disk (VHD) virtual servers. It automatically pre-registers each recovery point (including incrementals) with the hypervisor for immediate recovery as a VM if a system outage occurs. VMs can be powered on manually or automatically. In addition, it enables physical-to-virtual (P2V) and virtual-to-virtual (V2V) migration. Copies of VMs can be used for pre-flight deployment, software installations and upgrade testing when desired.

Supported Platforms

The complete list of currently supported platforms, operating systems and applications are listed on the [CA Support Website](#)



CA ARCserve® D2D & CA ARCserve Central Applications: *Pricing and Licensing Guide*

CA ARCserve Central Applications – 4 NEW!! Apps

CA ARCSERVE CENTRAL PROTECTION MANAGER and CA ARCSERVE CENTRAL REPORTING are included with all CA ARCserve® D2D r16 purchases at NO ADDITIONAL COST!!!

Editions	Available Support	Purchase Options
CA ARCserve Central Protection Manager	Enterprise Support	Freely Downloadable
CA ARCserve Central Reporting	Enterprise Support	Freely Downloadable
CA ARCserve Central Virtual Standby	Enterprise Support	Flexible purchase options: Purchase per Physical Server or Single VM OR Purchase per Virtual Host Server (all VMs on Hyper-V or VMware Host)
CA ARCserve Central Host-Based VM Backup (Support for VMware Only at this time)	Enterprise Support	Purchase per VMware ESX Host Server

Note:

1. CA ARCserve Central Protection Manager and CA ARCserve Central Reporting are freely downloadable applications available with any/every CA ARCserve D2D purchase AT NO ADDITIONAL COST
2. Flexible pricing for CA ARCserve Central Virtual Standby – customers can choose to purchase licenses to protect individual servers (physical or virtual) OR purchase a single license to protect unlimited guests of a VMware or a Hyper-V hypervisor

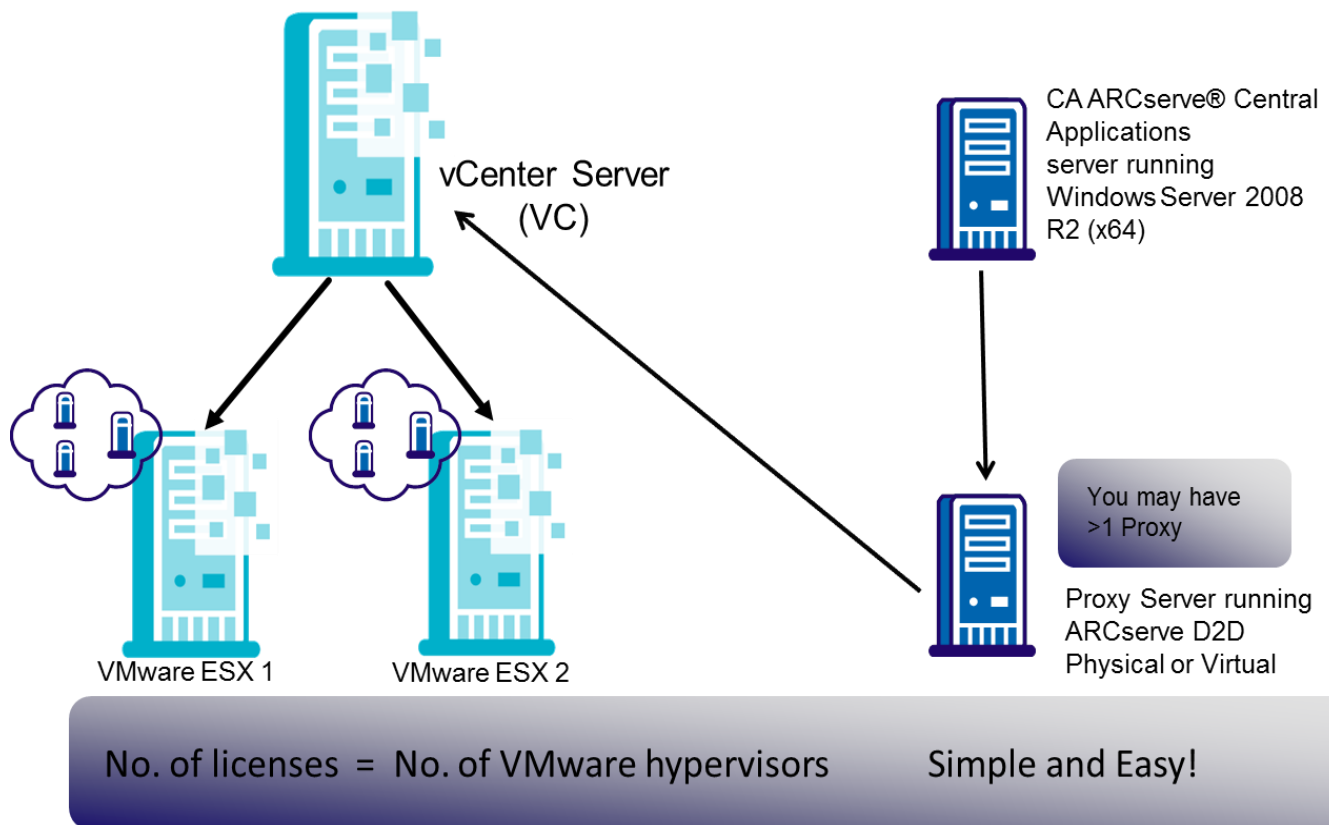
CA ARCserve D2D r16 for Windows Server Advanced Virtual Edition per Host License = unlimited VM protection + Host-Based protection + Virtual Standby per host

CA ARCserve D2D r16 for Windows Server Advanced Virtual Edition per socket license = unlimited VM protection + Host-Based protection + Virtual Standby per instance

CA ARCserve® D2D & CA ARCserve Central Applications: *Pricing and Licensing Guide*



CA ARCserve Central Host-Based VM Backup - Sample Licensing Use Case:



Problem: User needs to protect 2 VMware ESX servers and doesn't need to protect the proxy servers, how many licenses does the user need?

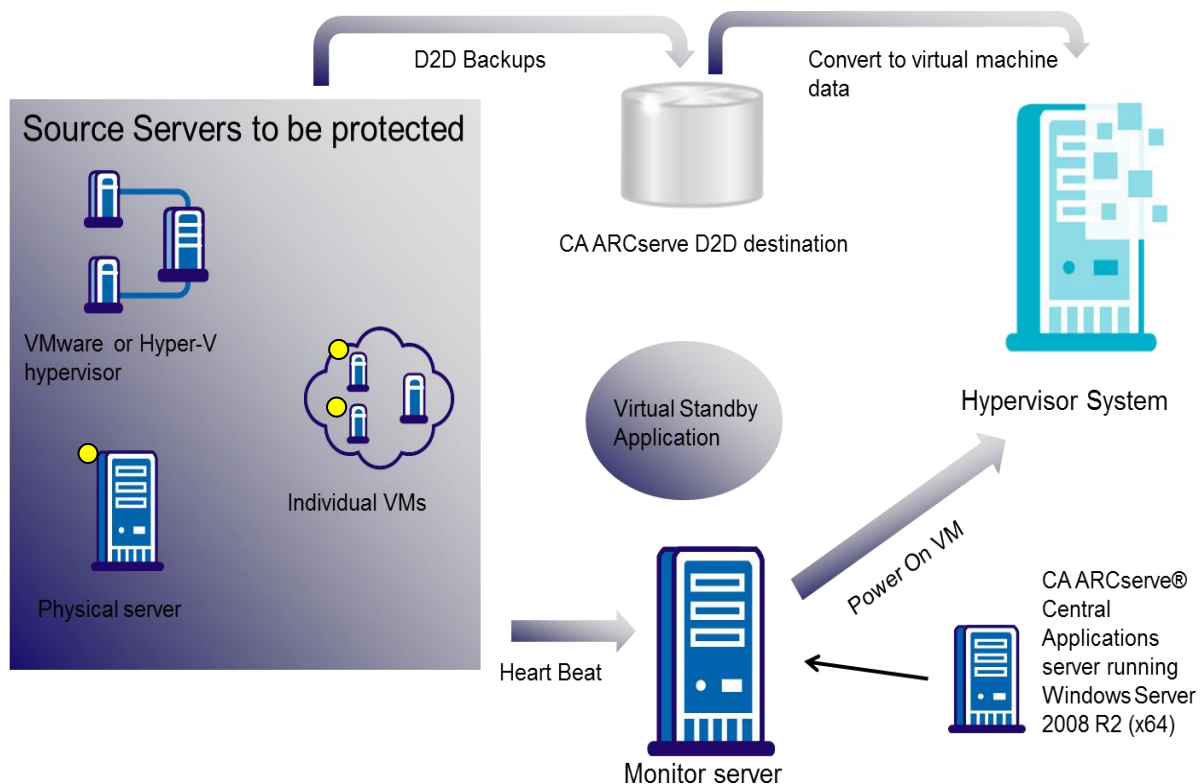
Solution: 2 – one per VMware ESX server. User doesn't need licenses for the proxy unless it is protecting the proxy server itself.

Note: Licenses are not transferrable to multiple host servers

CA ARCserve® D2D & CA ARCserve Central Applications: Pricing and Licensing Guide



CA ARCserve Central Virtual Standby - Sample Licensing Use Case:



Number of licenses required = Number of source servers protected

Simple & Flexible!!!

Problem: User needs to protect all their VMs of 1 Hyper-V system + 1 physical server + 2 VMs on a VMware ESX hypervisor, how many licenses does the user need? ● = servers being protected

Solution: User will need 1 CA ARCserve® Central Virtual Standby r16 per Host License and 3 CA ARCserve® Central Virtual Standby r16 per Instance Licenses. There is no need to license the monitor unless the monitor itself needs to be protected.

CA ARCserve® D2D & CA ARCserve Central Applications: *Pricing and Licensing Guide*



Managed Capacity & MSP Offerings

CA ARCserve Managed Capacity Program (MCP) Pricing is designed for large companies with complex IT environments and highly demanding requirements with 25 or more servers and over 2TB of protected storage capacity.

MCP is licensed per “protected Terabyte” and allows unlimited access to the selected product technology to protect up to the license capacity purchased. A customer starts by selecting the product/s and then licenses the required number of protected Terabytes from 16 different pricing / licensing bands. These Managed Capacity Bands start with a 2TB minimum purchase and have available discounted price bands in excess of 200TB.

Benefits:

- Cost-effectively protects data based on value to the user’s business.
- Reduces the amount of time the user’s IT resources spend managing software licenses.
- Easily scales to meet demanding business requirements.
- Provides complete flexibility to provision CA ARCserve product technology as needed to meet changing business needs.
- Helps manage financial resources more effectively.
- Increases operational efficiency through reduced cost of acquisition and known cost to protect additional servers, applications and data.
- Provides data protection for remote offices and sales force via WAN without expensive storage devices or additional staff.



CA ARCserve® D2D & CA ARCserve Central Applications: *Pricing and Licensing Guide*

Managed Capacity Program that include: CA ARCserve D2D R16 & CA ARCserve Central Applications R16	Description
CA ARCserve All-Inclusive Managed Capacity Program	<p>CA ARCserve All-Inclusive Managed Capacity Program (MCP) provides unlimited access to the CA ARCserve Family of products listed below. Pricing is based on protected storage capacity (i.e. the storage or data being protected).</p> <ul style="list-style-type: none"> ✓ CA ARCserve Backup r16 ✓ CA ARCserve D2D r16* ✓ CA ARCserve Replication r16 ✓ CA ARCserve High Availability r16 and ✓ CA ARCserve Central Protection Applications <ul style="list-style-type: none"> ○ CA ARCserve Central Protection Manager ○ CA ARCserve Central Reporting ○ CA ARCserve Central Virtual Standby ○ CA ARCserve Central Host-Based VM Backup
CA ARCserve D2D ONLY Managed Capacity Program	<p>CA ARCserve D2D ONLY Managed Capacity Program works just like the All-Inclusive program but licensing is limited to ONLY the below products</p> <ul style="list-style-type: none"> ✓ CA ARCserve D2D* ✓ CA ARCserve Central Protection Applications <ul style="list-style-type: none"> ○ CA ARCserve Central Protection Manager for Windows ○ CA ARCserve Central Reporting for Windows <p>It DOES NOT include access to</p> <ul style="list-style-type: none"> × CA ARCserve Backup or × CA ARCserve Replication or × CA ARCserve High Availability or × CA ARCserve Central Protection Applications – below apps are NOT included <ul style="list-style-type: none"> ○ CA ARCserve Central Host-Based VM Backup for Windows ○ CA ARCserve Central Virtual Standby for Windows

*CA ARCserve D2D included in MCP includes support for all supported Operating Systems, both Server and workstation.

CA ARCserve® D2D & CA ARCserve Central Applications: *Pricing and Licensing Guide*



Monthly Subscription

Monthly Subscription Licensing is available exclusively to Authorized Managed Service Providers. It provides a flexible and economical way for MSPs to license core CA ARCserve technology to provide services to their customers. MSPs can license on “per protected server” or “per protected capacity” model.

Per-Server Monthly Subscription

There are 2 ‘per server’ based product offerings

- CA ARCserve D2D R16 Standard
- CA ARCserve D2D R16 Advanced

Managed Capacity Monthly Subscription

New in R16 is the ability to license select Managed Capacity Programs to MSP on a Monthly subscription basis. We have opened up 4 Capacity/Price Bands – 2-10 TB, 11-25TB, 26-50 TB, and 51+ TB to MSPs for the following product offerings that include CA ARCserve D2D R16 and CA ARCserve Central Applications:

1. CA ARCserve D2D only Managed Capacity
2. CA ARCserve All-Inclusive Managed Capacity

Note: for MSP per-Server and Capacity calculation purposes, only the protected End User systems or amount of protected End User data is used to determine the MSP’s Monthly Charges. Backend infrastructure systems, data are excluded from calculations.

CA ARCserve D2D Workstation Edition Monthly Subscription

Finally, the new ARCserve D2D Workstation packs with 5, 10, 25, 50, 100, 250, 500 Pack License options, have also been added to the monthly MSP Subscription program.

CA ARCserve® D2D & CA ARCserve Central Applications: *Pricing and Licensing Guide*



Modules with D2D and Replication Bundles:

R15 Solution Name	R16 equivalent SKU name	Includes
CA ARCserve r15 Essentials File Server Solutions	CA ARCserve Backup r16 for Windows Essentials File Server Module with D2D and Replication	<ol style="list-style-type: none"> 1 copy of CA ARCserve Backup r16 for Windows Essentials File Server Module 1 copy of CA ARCserve D2D r16 for Windows Server Standard Edition 2 copies of CA ARCserve Backup r16 Replication for File Servers Windows OS*
CA ARCserve r15 Standard Database Solutions	CA ARCserve Backup r16 for Windows Standard Database Module with D2D and Replication	<ol style="list-style-type: none"> 1 copy of CA ARCserve Backup r16 for Windows Standard Database Module 1 copy of CA ARCserve D2D r16 for Windows Server Advanced Edition 2 copies of CA ARCserve Backup r16 Replication for Application Servers Windows OS*
CA ARCserve r15 Advanced Email Solutions	CA ARCserve Backup r16 for Windows Advanced Email Module with D2D and Replication	<ol style="list-style-type: none"> 1 copy of CA ARCserve Backup r16 for Windows Advanced Email Module 1 copy of CA ARCserve D2D r16 for Windows Server Advanced Edition 2 copies of CA ARCserve Backup r16 Replication for Application Servers Windows OS*
CA ARCserve r15 Enterprise Application Solutions	CA ARCserve Backup r16 for Windows Enterprise Application Module with D2D and Replication	<ol style="list-style-type: none"> 1 copy of CA ARCserve Backup r16 for Windows Enterprise Application Module 1 copy of CA ARCserve Backup r16 for Windows Global Dashboard (per Managed site) 1 copy of CA ARCserve D2D r16 for Windows Server Advanced Edition 2 copies of CA ARCserve Backup r16 Replication for Application Servers Windows OS*

*Note that none of the Modules include ARCserve High Availability or Assured Recovery licenses

CA ARCSERVE CENTRAL PROTECTION MANAGER and CA ARCSERVE CENTRAL REPORTING are included with all CA ARCserve D2D r16 purchases at NO ADDITIONAL COST!!!